

For Research Use Only

PPM1G Recombinant monoclonal antibody, PBS Only

Catalog Number: 87250-3-PBS



Basic Information

Catalog Number:

87250-3-PBS

Size:

100ug, Concentration: 1 mg/ml by Nanodrop;

Source:

Rabbit

Isotype:

IgG

Immunogen Catalog Number:

AG7751

GenBank Accession Number:

BC000057

GeneID (NCBI):

5496

UNIPROT ID:

O15355

Full Name:

protein phosphatase 1G (formerly 2C), magnesium-dependent, gamma isoform

Calculated MW:

59 kDa

Observed MW:

70 kDa

Purification Method:

Protein A purification

CloneNo.:

252477B6

Applications

Tested Applications:

WB, IHC, IF/ICC, Indirect ELISA

Species Specificity:

human

Storage

Storage:

Store at -80°C.

Storage Buffer:

PBS only, pH7.3

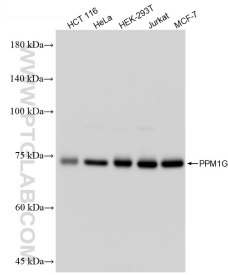
For technical support and original validation data for this product please contact:

T: 1 (888) 4PTGLAB (1-888-478-4522) (toll free in USA), or 1(312) 455-8498 (outside USA)

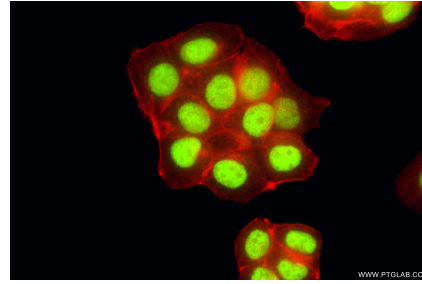
E: proteintech@ptglab.com
W: ptglab.com

This product is exclusively available under Proteintech Group brand and is not available to purchase from any other manufacturer.

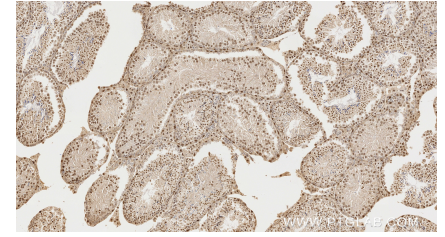
Selected Validation Data



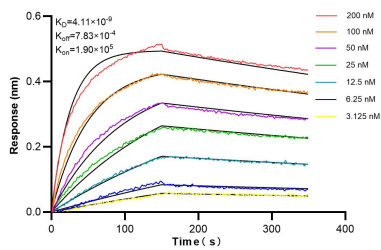
Various lysates were subjected to SDS PAGE followed by western blot with 87250-3-RR (PPM1G antibody) at dilution of 1:5000 incubated at room temperature for 1.5 hours. This data was developed using the same antibody clone with 87250-3-PBS in a different storage buffer formulation.



Immunofluorescent analysis of (4% PFA) fixed MCF-7 cells using PPM1G antibody (87250-3-RR, Clone: 252477B6) at dilution of 1:500 and CoraLite® 488-Conjugated Goat Anti-Rabbit IgG(H+L) (SA00013-2), CL594-Phalloidin (red). This data was developed using the same antibody clone with 87250-3-PBS in a different storage buffer formulation.



Immunohistochemical analysis of paraffin-embedded mouse testis tissue slide using 87250-3-RR (PPM1G antibody) at dilution of 1:1000 (under 10x lens). Heat mediated antigen retrieval with Tris-EDTA buffer (pH 9.0). This data was developed using the same antibody clone with 87250-3-PBS in a different storage buffer formulation.



Biolayer interferometry (BLI) kinetic assays of 87250-3-RR against Human PPM1G were performed. The affinity constant is 4.11 nM.