

For Research Use Only

PPM1G Recombinant monoclonal antibody

Catalog Number: 87250-3-RR



Basic Information

Catalog Number: 87250-3-RR	GenBank Accession Number: BC000057	Purification Method: Protein A purification
Size: 100ul , Concentration: 1000 µg/ml by Nanodrop;	GeneID (NCBI): 5496	CloneNo.: 252477B6
Source: Rabbit	UNIPROT ID: O15355	Recommended Dilutions: WB: 1:2000-1:10000 IHC: 1:500-1:2000
Isotype: IgG	Full Name: protein phosphatase 1G (formerly 2C), magnesium-dependent, gamma isoform	IF/ICC: 1:250-1:1000
Immunogen Catalog Number: AG7751	Calculated MW: 59 kDa	
	Observed MW: 70 kDa	

Applications

Tested Applications:

WB, IF/ICC, ELISA

Species Specificity:

human

Note-IHC: suggested antigen retrieval with TE buffer pH 9.0; (*) Alternatively, antigen retrieval may be performed with citrate buffer pH 6.0

Positive Controls:

WB : HCT 116 cells, HeLa cells, HEK-293T cells, Jurkat cells, MCF-7 cells

IHC : mouse testis tissue,

IF/ICC : MCF-7 cells,

Storage

Storage:

Store at -20°C. Stable for one year after shipment.

Storage Buffer:

PBS with 0.02% sodium azide and 50% glycerol, pH7.3

Aliquoting is unnecessary for -20°C storage

*** 20ul sizes contain 0.1% BSA

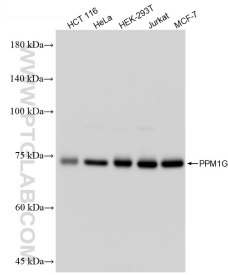
For technical support and original validation data for this product please contact:

T: 1 (888) 4PTGLAB (1-888-478-4522) (toll free in USA), or 1(312) 455-8498 (outside USA)

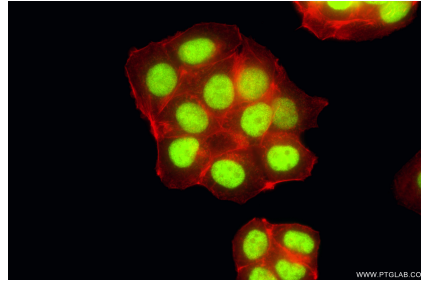
E: proteintech@ptglab.com
W: ptglab.com

This product is exclusively available under Proteintech Group brand and is not available to purchase from any other manufacturer.

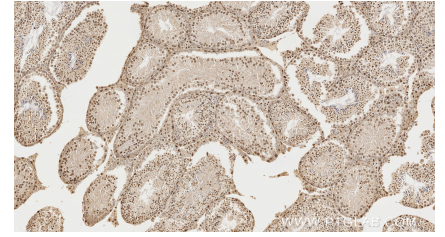
Selected Validation Data



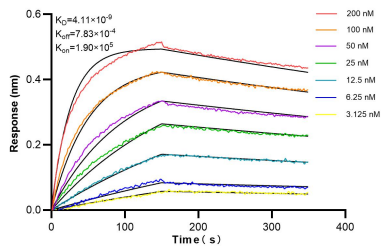
Various lysates were subjected to SDS PAGE followed by western blot with 87250-3-RR (PPM1G antibody) at dilution of 1:5000 incubated at room temperature for 1.5 hours.



Immunofluorescent analysis of (4% PFA) fixed MCF-7 cells using PPM1G antibody (87250-3-RR, Clone: 252477B6) at dilution of 1:500 and CoraLite® 488-Conjugated Goat Anti-Rabbit IgG(H+L) (SA00013-2), CL594-Phalloidin (red).



Immunohistochemical analysis of paraffin-embedded mouse testis tissue slide using 87250-3-RR (PPM1G antibody) at dilution of 1:1000 (under 10x lens). Heat mediated antigen retrieval with Tris-EDTA buffer (pH 9.0).



Biolayer interferometry (BLI) kinetic assays of 87250-3-RR against Human PPM1G were performed. The affinity constant is 4.11 nM.