

For Research Use Only

XRCC1 Recombinant monoclonal antibody

Catalog Number: 87251-1-RR



Basic Information

Catalog Number: 87251-1-RR	GenBank Accession Number: BC023593	Purification Method: Protein A purification
Size: 100ul , Concentration: 1000 µg/ml by Nanodrop;	GeneID (NCBI): 7515	CloneNo.: 252518B12
Source: Rabbit	UNIPROT ID: P18887	Recommended Dilutions: WB: 1:2000-1:10000 IF/ICC: 1:400-1:1600
Isotype: IgG	Full Name: X-ray repair complementing defective repair in Chinese hamster cells 1	
Immunogen Catalog Number: AG15172	Calculated MW: 633 aa, 70 kDa	
	Observed MW: 80-90 kDa	

Applications

Tested Applications: WB, IF/ICC, ELISA	Positive Controls:
Species Specificity: human	WB : HEK-293 cells, Jurkat cells, K-562 cells, U2OS cells IF/ICC : Jurkat cells,

Background Information

XRCC1 (X-ray Repair Cross Complementing group 1) is a molecular scaffold protein that interacts with multiple enzymatic components of DNA single-strand break repair (SSBR) including DNA kinase, DNA phosphatase, DNA polymerase, DNA deadenylase, and DNA ligase activities that collectively are capable of accelerating the repair of a broad range of DNA single-strand breaks (SSBs) (PMID: 18515191). XRCC1 is 633 amino acids in length which is comprised of an N-terminal domain (NTD) of ~160 amino acids that interacts with Pol β, a central BRCT domain of ~90 amino acids that interacts with PARP1 (PMID: 9584196). This antibody is not suitable for murine samples.

Storage

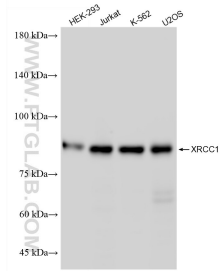
Storage:
Store at -20°C. Stable for one year after shipment.
Storage Buffer:
PBS with 0.02% sodium azide and 50% glycerol, pH7.3
Aliquoting is unnecessary for -20°C storage

*** 20ul sizes contain 0.1% BSA

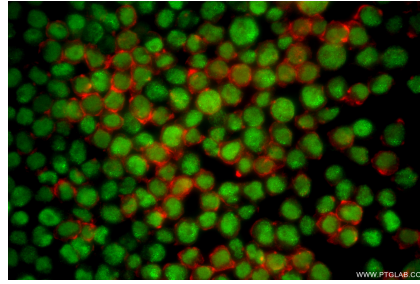
For technical support and original validation data for this product please contact:
T: 1 (888) 4PTGLAB (1-888-478-4522) (toll free in USA), or 1(312) 455-8498 (outside USA)
E: proteintech@ptglab.com
W: ptglab.com

This product is exclusively available under Proteintech Group brand and is not available to purchase from any other manufacturer.

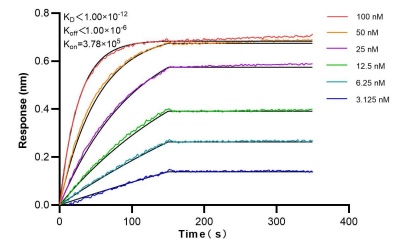
Selected Validation Data



Various lysates were subjected to SDS PAGE followed by western blot with 87251-1-RR (XRCC1 antibody) at dilution of 1:5000 incubated at room temperature for 1.5 hours.



Immunofluorescent analysis of (4% PFA) fixed Jurkat cells using XRCC1 antibody (87251-1-RR, Clone: 252518B12) at dilution of 1:800 and CoraLite® 488-Conjugated Goat Anti-Rabbit IgG(H+L) (SA00013-2), CL594-Phalloidin (red).



Bi-layer interferometry (BLI) kinetic assays of 87251-1-RR against Human XRCC1 were performed. The affinity constant is below 1 pM.