

For Research Use Only

Mouse Casp1 Recombinant monoclonal antibody, PBS Only (Detector)

Catalog Number:87271-1-PBS



Basic Information

Catalog Number: 87271-1-PBS	GenBank Accession Number: BC008152	Purification Method: Protein A purification
Size: 100ug , Concentration: 1 mg/ml by Nanodrop;	GeneID (NCBI): 12362	CloneNo.: 252481H2
Source: Rabbit	UNIPROT ID: P29452	
Isotype: IgG	Full Name: caspase 1	
Immunogen Catalog Number: AG34441		

Applications

Tested Applications:
Cytometric bead array, Indirect ELISA

Species Specificity:
mouse

Product Information

87271-1-PBS targets Casp1 as part of a matched antibody pair:

MP02932-1: 87271-2-PBS capture and 87271-1-PBS detection (validated in Cytometric bead array)

Unconjugated rabbit recombinant monoclonal antibody in PBS only (BSA and azide free) storage buffer at a concentration of 1 mg/mL, ready for conjugation. Created using Proteintech's proprietary in-house recombinant technology. Recombinant production enables unrivalled batch-to-batch consistency, easy scale-up, and future security of supply.

This conjugation ready format makes antibodies ideal for use in many applications including: ELISAs, multiplex assays requiring matched pairs, mass cytometry, and multiplex imaging applications. Antibody use should be optimized by the end user for each application and assay.

Storage

Storage:
Store at -80°C.
Storage Buffer:
PBS only, pH7.3

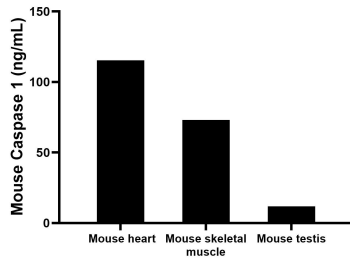
For technical support and original validation data for this product please contact:

T: 1 (888) 4PTGLAB (1-888-478-4522) (toll free in USA), or 1(312) 455-8498 (outside USA)

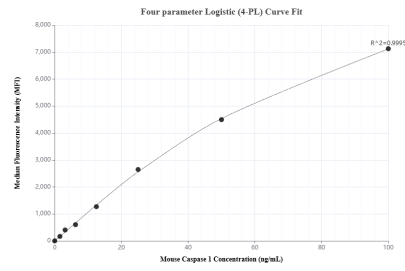
E: proteintech@ptglab.com
W: ptglab.com

This product is exclusively available under Proteintech Group brand and is not available to purchase from any other manufacturer.

Selected Validation Data



The mean Caspase 1 concentration was determined to be 115.3 ng/mL in Mouse heart tissue extract based on a 5.4 mg/mL extract load, 73.0 ng/mL in Mouse skeletal muscle tissue extract based on a 4.1 mg/mL extract load, 11.9 ng/mL in Mouse testis tissue extract based on a 4.2 mg/mL extract load.



Cytometric bead array standard curve of MP02932-1, MOUSE Caspase 1 Recombinant Matched Antibody Pair, PBS Only. Capture antibody: 87271-2-PBS. Detection antibody: 87271-1-PBS. Standard: Ag34441. Range: 1.562-100 ng/mL.