

For Research Use Only

PLAGL1 Recombinant monoclonal antibody, PBS Only

Catalog Number:87281-1-PBS



Basic Information

Catalog Number: 87281-1-PBS	GenBank Accession Number: BC074814	Purification Method: Protein A purification
Size: 100ug, Concentration: 1 mg/ml by Nanodrop;	GeneID (NCBI): 5325	CloneNo.: 252553G12
Source: Rabbit	UNIPROT ID: Q9UM63	
Isotype: IgG	Full Name: pleiomorphic adenoma gene-like 1	
Immunogen Catalog Number: AG23073	Calculated MW: 463 aa, 51 kDa	

Applications

Tested Applications:
WB, Indirect ELISA

Species Specificity:
human

Background Information

PLAGL1 (Pleomorphic adenoma gene-like 1) is a crucial zinc-finger transcription factor acting as a tumor suppressor, regulating cell cycle, growth (apoptosis), and embryonic development, particularly involved in pancreatic function and imprinted expression (paternal allele). While its family member PLAG1 is an oncogene in salivary tumors, PLAGL1 often suppresses tumors, though its dysregulation is linked to transient neonatal diabetes mellitus (TNDM) and certain cancers, highlighting its complex role in growth control and metabolic homeostasis.

Storage

Storage:
Store at -80°C.

Storage Buffer:
PBS only, pH7.3

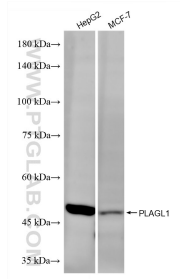
For technical support and original validation data for this product please contact:

T: 1 (888) 4PTGLAB (1-888-478-4522) (toll free in USA), or 1(312) 455-8498 (outside USA)

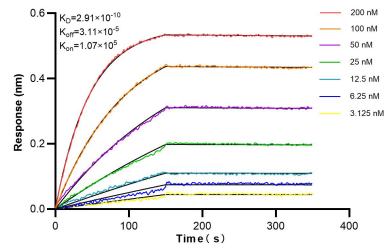
E: proteintech@ptglab.com
W: ptglab.com

This product is exclusively available under Proteintech Group brand and is not available to purchase from any other manufacturer.

Selected Validation Data



Various lysates were subjected to SDS PAGE followed by western blot with 87281-1-RR (PLAGL1 antibody) at dilution of 1:2000 incubated at room temperature for 1.5 hours. This data was developed using the same antibody clone with 87281-1-PBS in a different storage buffer formulation.



Biolayer interferometry (BLI) kinetic assays of 87281-1-RR against Human PLAGL1 were performed. The affinity constant is 0.291 nM.