

For Research Use Only

PLAGL1 Recombinant monoclonal antibody

Catalog Number: 87281-1-RR



Basic Information

Catalog Number: 87281-1-RR	GenBank Accession Number: BC074814	Purification Method: Protein A purification
Size: 100ul , Concentration: 1000 µg/ml by Nanodrop;	GeneID (NCBI): 5325	CloneNo.: 252553G12
Source: Rabbit	UNIPROT ID: Q9UM63	Recommended Dilutions: WB: 1:1000-1:4000
Isotype: IgG	Full Name: pleiomorphic adenoma gene-like 1	
Immunogen Catalog Number: AG23073	Calculated MW: 463 aa, 51 kDa	

Applications

Tested Applications: WB, ELISA	Positive Controls: WB : HepG2 cells, MCF-7 cells
Species Specificity: human	

Background Information

PLAGL1 (Pleomorphic adenoma gene-like 1) is a crucial zinc-finger transcription factor acting as a tumor suppressor, regulating cell cycle, growth (apoptosis), and embryonic development, particularly involved in pancreatic function and imprinted expression (paternal allele). While its family member PLAG1 is an oncogene in salivary tumors, PLAGL1 often suppresses tumors, though its dysregulation is linked to transient neonatal diabetes mellitus (TNDM) and certain cancers, highlighting its complex role in growth control and metabolic homeostasis.

Storage

Storage:
Store at -20°C. Stable for one year after shipment.
Storage Buffer:
PBS with 0.02% sodium azide and 50% glycerol, pH7.3
Aliquoting is unnecessary for -20°C storage

*** 20ul sizes contain 0.1% BSA

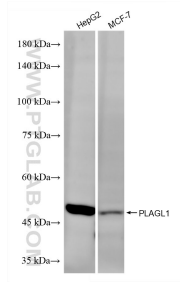
For technical support and original validation data for this product please contact:

T: 1 (888) 4PTGLAB (1-888-478-4522) (toll free in USA), or 1(312) 455-8498 (outside USA)

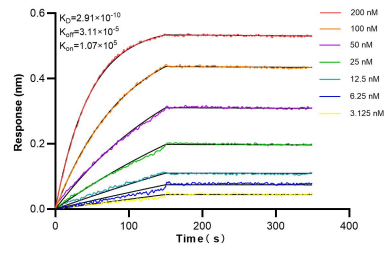
E: proteintech@ptglab.com
W: ptglab.com

This product is exclusively available under Proteintech Group brand and is not available to purchase from any other manufacturer.

Selected Validation Data



Various lysates were subjected to SDS PAGE followed by western blot with 87281-1-RR (PLAGL1 antibody) at dilution of 1:2000 incubated at room temperature for 1.5 hours.



Biolayer interferometry (BLI) kinetic assays of 87281-1-RR against Human PLAGL1 were performed. The affinity constant is 0.291 nM.