

For Research Use Only

UBE2O Recombinant monoclonal antibody, PBS Only

Catalog Number: 87282-1-PBS



Basic Information

Catalog Number: 87282-1-PBS	GenBank Accession Number: BC007822	Purification Method: Protein A purification
Size: 100ug , Concentration: 1 mg/ml by Nanodrop;	GeneID (NCBI): 63893	CloneNo.: 252545E2
Source: Rabbit	UNIPROT ID: Q9C0C9	
Isotype: IgG	Full Name: ubiquitin-conjugating enzyme E2O	
Immunogen Catalog Number: AG8580	Calculated MW: 1292 aa, 141 kDa	
	Observed MW: 200 kDa	

Applications

Tested Applications:
WB, IF/ICC, Indirect ELISA

Species Specificity:
human, mouse, rat

Background Information

UBE2O, also named as KIAA1734, belongs to the ubiquitin-conjugating enzyme family. It catalyzes the covalent attachment of ubiquitin to other proteins. UBE2O has a calculated molecular mass of 141 kDa, and many bands can be detected as 140-170 kDa and 200-230 kDa (PMID: 28774900, 23455153, 28774922, 11311559).

Storage

Storage:
Store at -80°C.

Storage Buffer:
PBS only, pH7.3

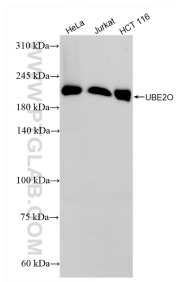
For technical support and original validation data for this product please contact:

T: 1 (888) 4PTGLAB (1-888-478-4522) (toll free in USA), or 1(312) 455-8498 (outside USA)

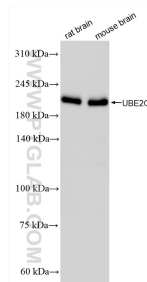
E: proteintech@ptglab.com
W: ptglab.com

This product is exclusively available under Proteintech Group brand and is not available to purchase from any other manufacturer.

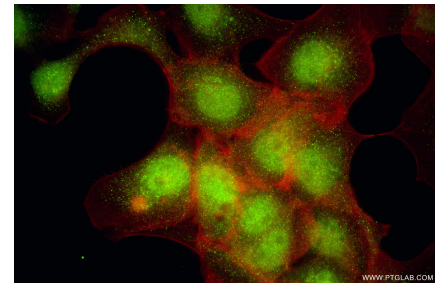
Selected Validation Data



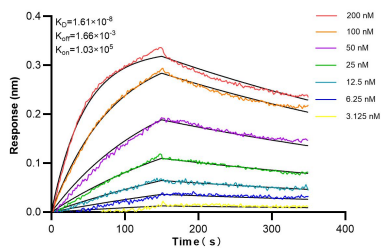
Various lysates were subjected to SDS PAGE followed by western blot with 87282-1-RR (UBE2O antibody) at dilution of 1:2000 incubated at room temperature for 1.5 hours. This data was developed using the same antibody clone with 87282-1-PBS in a different storage buffer formulation.



Various lysates were subjected to SDS PAGE followed by western blot with 87282-1-RR (UBE2O antibody) at dilution of 1:2000 incubated at room temperature for 1.5 hours. This data was developed using the same antibody clone with 87282-1-PBS in a different storage buffer formulation.



Immunofluorescent analysis of (4% PFA) fixed A431 cells using UBE2O antibody (87282-1-RR, Clone: 252545E2) at dilution of 1:200 and CoraLite® 488-Conjugated Goat Anti-Rabbit IgG(H+L) (SA00013-2), CL594-Phalloidin (red). This data was developed using the same antibody clone with 87282-1-PBS in a different storage buffer formulation.



Biolayer interferometry (BLI) kinetic assays of 87282-1-RR against Human UBE2O were performed. The affinity constant is 16.1 nM.