

For Research Use Only

# UBE2O Recombinant monoclonal antibody

Catalog Number: 87282-1-RR



## Basic Information

<b>Catalog Number:</b> 87282-1-RR	<b>GenBank Accession Number:</b> BC007822	<b>Purification Method:</b> Protein A purification
<b>Size:</b> 100ul , Concentration: 1000 µg/ml by Nanodrop;	<b>GeneID (NCBI):</b> 63893	<b>CloneNo.:</b> 252545E2
<b>Source:</b> Rabbit	<b>UNIPROT ID:</b> Q9C0C9	<b>Recommended Dilutions:</b> WB: 1:1000-1:4000 IF/ICC: 1:50-1:500
<b>Isotype:</b> IgG	<b>Full Name:</b> ubiquitin-conjugating enzyme E2O	
<b>Immunogen Catalog Number:</b> AG8580	<b>Calculated MW:</b> 1292 aa, 141 kDa	
	<b>Observed MW:</b> 200 kDa	

## Applications

<b>Tested Applications:</b> WB, IF/ICC, ELISA	<b>Positive Controls:</b> WB : HeLa cells, rat brain tissue, Jurkat cells, HCT 116 cells, mouse brain tissue
<b>Species Specificity:</b> human, mouse, rat	<b>IF/ICC :</b> A431 cells,

## Background Information

UBE2O, also named as KIAA1734, belongs to the ubiquitin-conjugating enzyme family. It catalyzes the covalent attachment of ubiquitin to other proteins. UBE2O has a calculated molecular mass of 141 kDa, and many bands can be detected as 140-170 kDa and 200-230 kDa (PMID: 28774900, 23455153, 28774922, 11311559).

## Storage

**Storage:**  
Store at -20°C. Stable for one year after shipment.  
**Storage Buffer:**  
PBS with 0.02% sodium azide and 50% glycerol, pH7.3  
Aliquoting is unnecessary for -20°C storage

\*\*\* 20ul sizes contain 0.1% BSA

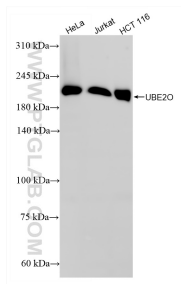
For technical support and original validation data for this product please contact:

T: 1 (888) 4PTGLAB (1-888-478-4522) (toll free in USA), or 1(312) 455-8498 (outside USA)

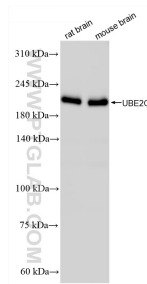
E: [proteintech@ptglab.com](mailto:proteintech@ptglab.com)  
W: [ptglab.com](http://ptglab.com)

This product is exclusively available under Proteintech Group brand and is not available to purchase from any other manufacturer.

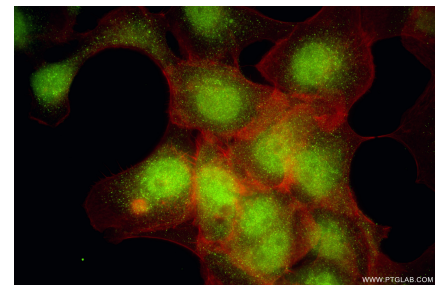
## Selected Validation Data



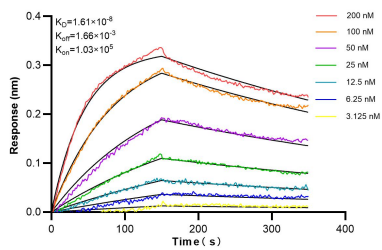
Various lysates were subjected to SDS PAGE followed by western blot with 87282-1-RR (UBE2O antibody) at dilution of 1:2000 incubated at room temperature for 1.5 hours.



Various lysates were subjected to SDS PAGE followed by western blot with 87282-1-RR (UBE2O antibody) at dilution of 1:2000 incubated at room temperature for 1.5 hours.



Immunofluorescent analysis of (4% PFA) fixed A431 cells using UBE2O antibody (87282-1-RR, Clone: 252545E2) at dilution of 1:200 and CoraLite® 488-Conjugated Goat Anti-Rabbit IgG(H+L) (SA00013-2), CL594-Phalloidin (red).



Biolayer interferometry (BLI) kinetic assays of 87282-1-RR against Human UBE2O were performed. The affinity constant is 16.1 nM.