

For Research Use Only

SNAP23 Recombinant monoclonal antibody, PBS Only

Catalog Number: 87283-1-PBS



Basic Information

Catalog Number: 87283-1-PBS	GenBank Accession Number: NM_003825.4	Purification Method: Protein A purification
Size: 100ug , Concentration: 1 mg/ml by Nanodrop;	GeneID (NCBI): 8773	CloneNo.: 252538F2
Source: Rabbit	UNIPROT ID: O00161	
Isotype: IgG	Full Name: synaptosomal-associated protein, 23kDa	
Immunogen Catalog Number: EG6079	Calculated MW: 23 kDa	
	Observed MW: 23-25 kDa	

Applications

Tested Applications:
WB, Indirect ELISA

Species Specificity:
human, mouse, rat

Background Information

SNAP23 (synaptosome-associated protein 23 kDa) is a widely expressed SNARE protein that mediates vesicle docking and membrane fusion during exocytosis. SNAP23 plays a crucial role in insulin-regulated glucose metabolism, cell division, and cell proliferation.

Storage

Storage:
Store at -80°C.

Storage Buffer:
PBS only, pH7.3

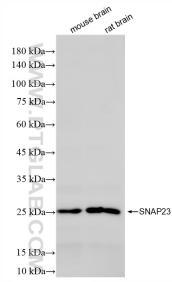
For technical support and original validation data for this product please contact:

T: 1 (888) 4PTGLAB (1-888-478-4522) (toll free in USA), or 1(312) 455-8498 (outside USA)

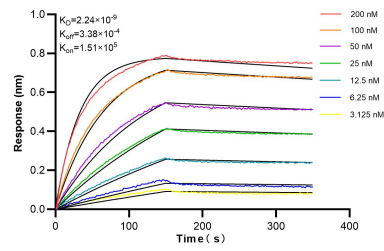
E: proteintech@ptglab.com
W: ptglab.com

This product is exclusively available under Proteintech Group brand and is not available to purchase from any other manufacturer.

Selected Validation Data



Various lysates were subjected to SDS PAGE followed by western blot with 87283-1-RR (SNAP23 antibody) at dilution of 1:1000 incubated at room temperature for 1.5 hours. This data was developed using the same antibody clone with 87283-1-PBS in a different storage buffer formulation.



Biolayer interferometry (BLI) kinetic assays of 87283-1-RR against Human SNAP23 were performed. The affinity constant is 2.24 nM.