

For Research Use Only

SNP23 Recombinant monoclonal antibody, PBS Only (Detector)

Catalog Number:87283-3-PBS



Basic Information

Catalog Number: 87283-3-PBS	GenBank Accession Number: NM_003825.4	Purification Method: Protein A purification
Size: 100ug , Concentration: 1 mg/ml by Nanodrop;	GeneID (NCBI): 8773	CloneNo.: 252538A4
Source: Rabbit	UNIPROT ID: O00161	
Isotype: IgG	Full Name: synaptosomal-associated protein, 23kDa	
Immunogen Catalog Number: EG6079	Calculated MW: 23 kDa	

Applications

Tested Applications:
Sandwich ELISA, Indirect ELISA

Species Specificity:
human

Product Information

87283-3-PBS targets SNP23 as part of a matched antibody pair.

MP03062-1: 87283-2-PBS capture and 87283-3-PBS detection (validated in Sandwich ELISA)

Unconjugated rabbit recombinant monoclonal antibody in PBS only (BSA and azide free) storage buffer at a concentration of 1 mg/mL, ready for conjugation. Created using Proteintech's proprietary in-house recombinant technology. Recombinant production enables unrivalled batch-to-batch consistency, easy scale-up, and future security of supply.

This conjugation ready format makes antibodies ideal for use in many applications including: ELISAs, multiplex assays requiring matched pairs, mass cytometry, and multiplex imaging applications. Antibody use should be optimized by the end user for each application and assay.

Storage

Storage:
Store at -80°C.

Storage Buffer:
PBS only, pH7.3

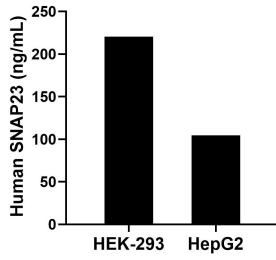
For technical support and original validation data for this product please contact:

T: 1 (888) 4PTGLAB (1-888-478-4522) (toll free in USA), or 1(312) 455-8498 (outside USA)

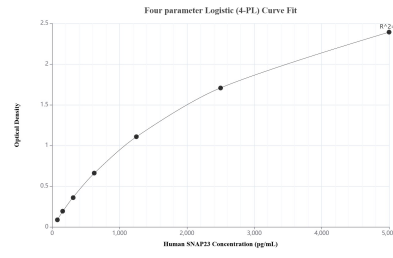
E: proteintech@ptglab.com
W: ptglab.com

This product is exclusively available under Proteintech Group brand and is not available to purchase from any other manufacturer.

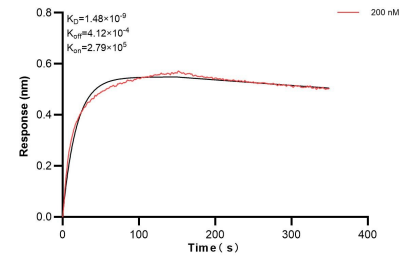
Selected Validation Data



The mean SNAP23 concentration was determined to be 220.5 ng/mL in HEK-293 cell extract based on a 1.2 mg/mL extract load and 104.5 ng/mL in HepG2 cell extract based on a 1.2 mg/mL extract load.



Sandwich ELISA standard curve of MP03062-1, Human SNAP23 Recombinant Matched Antibody Pair - PBS only. 87283-2-PBS was coated to a plate as the capture antibody and incubated with serial dilutions of standard Eg6079. 87283-3-PBS was HRP conjugated as the detection antibody. Range: 78.1-5000 pg/mL



Bi-layer interferometry (BLI) kinetic assay of 87283-3-PBS against Human SNAP23 was performed. The affinity constant is 1.48 nM.