

For Research Use Only

Human IgG3 Recombinant monoclonal antibody, PBS Only (Detector)

Catalog Number:87288-1-PBS



Basic Information

Catalog Number: 87288-1-PBS	GenBank Accession Number: 3502	Purification Method: Protein A purification
Size: 100ug , Concentration: 1 mg/ml by Nanodrop;	GeneID (NCBI): 3502	CloneNo.: 251290G5
Source: Rabbit	Full Name: immunoglobulin heavy constant gamma 3 (G3m marker)	
Isotype: IgG		
Immunogen Catalog Number: EG6674		

Applications

Tested Applications:
Cytometric bead array, Indirect ELISA

Species Specificity:
human

Product Information

87288-1-PBS targets Human IgG3 as part of a matched antibody pair:

MP02949-1: 87288-2-PBS capture and 87288-1-PBS detection (validated in Cytometric bead array)

Unconjugated rabbit recombinant monoclonal antibody in PBS only (BSA and azide free) storage buffer at a concentration of 1 mg/mL, ready for conjugation. Created using Proteintech's proprietary in-house recombinant technology. Recombinant production enables unrivalled batch-to-batch consistency, easy scale-up, and future security of supply.

This conjugation ready format makes antibodies ideal for use in many applications including: ELISAs, multiplex assays requiring matched pairs, mass cytometry, and multiplex imaging applications. Antibody use should be optimized by the end user for each application and assay.

Storage

Storage:
Store at -80°C.

Storage Buffer:
PBS only, pH7.3

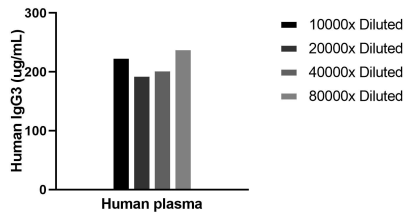
For technical support and original validation data for this product please contact:

T: 1 (888) 4PTGLAB (1-888-478-4522) (toll free in USA), or 1(312) 455-8498 (outside USA)

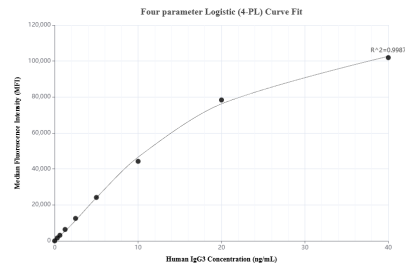
E: proteintech@ptglab.com
W: ptglab.com

This product is exclusively available under Proteintech Group brand and is not available to purchase from any other manufacturer.

Selected Validation Data



The mean IgG3 concentration was determined to be 215.8 ug/mL in Human plasma.



Cytometric bead array standard curve of MP02949-1, IgG3 Recombinant Matched Antibody Pair, PBS Only. Capture antibody: 87288-2-PBS. Detection antibody: 87288-1-PBS. Standard: Eg6674. Range: 0.312-40 ng/mL.