

For Research Use Only

Human IgG3 Recombinant monoclonal antibody, PBS Only (Capture)

Catalog Number: 87288-4-PBS



Basic Information

Catalog Number:

87288-4-PBS

Size:

100ug, Concentration: 1 mg/ml by Nanodrop;

Source:

Rabbit

Isotype:

IgG

Immunogen Catalog Number:

EG6674

GenBank Accession Number:

GeneID (NCBI):

3502

Full Name:

immunoglobulin heavy constant gamma 3 (G3m marker)

Purification Method:

Protein A purification

CloneNo.:

251290E11

Applications

Tested Applications:

Sandwich ELISA, Indirect ELISA

Species Specificity:

human

Product Information

87288-4-PBS targets Human IgG3 as part of a matched antibody pair.

MP02949-2: 87288-4-PBS capture and 87288-3-PBS detection (validated in Sandwich ELISA)

Unconjugated rabbit recombinant monoclonal antibody in PBS only (BSA and azide free) storage buffer at a concentration of 1 mg/mL, ready for conjugation. Created using Proteintech's proprietary in-house recombinant technology. Recombinant production enables unrivalled batch-to-batch consistency, easy scale-up, and future security of supply.

This conjugation ready format makes antibodies ideal for use in many applications including: ELISAs, multiplex assays requiring matched pairs, mass cytometry, and multiplex imaging applications. Antibody use should be optimized by the end user for each application and assay.

Storage

Storage:

Store at -80°C.

Storage Buffer:

PBS only, pH7.3

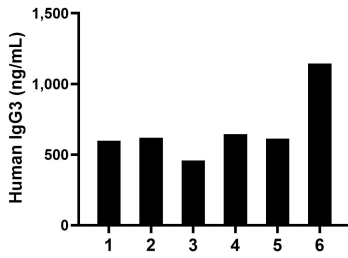
For technical support and original validation data for this product please contact:

T: 1 (888) 4PTGLAB (1-888-478-4522) (toll free in USA), or 1(312) 455-8498 (outside USA)

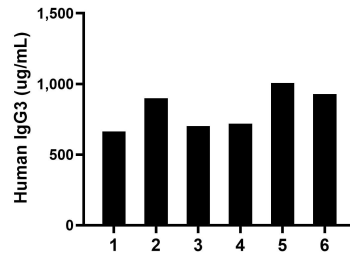
E: proteintech@ptglab.com
W: ptglab.com

This product is exclusively available under Proteintech Group brand and is not available to purchase from any other manufacturer.

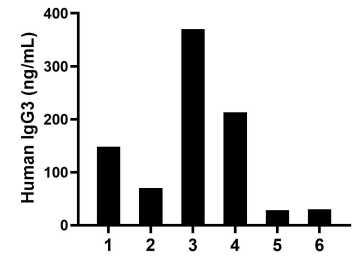
Selected Validation Data



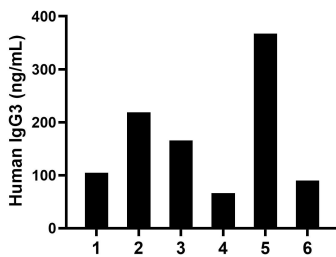
Human milk of six individual healthy human donors was measured. The IgG3 concentration of detected samples was determined to be 679.38 ng/mL with a range of 457.66-1,145.17 ng/mL.



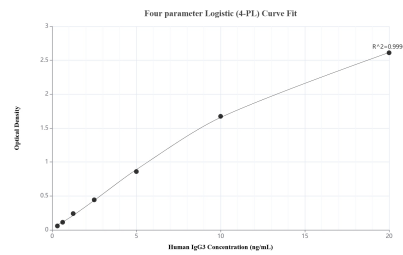
Plasma of six individual healthy human donors was measured. The IgG3 concentration of detected samples was determined to be 819.81 ug/mL with a range of 663.02-1,007.34 ug/mL.



Saliva of six individual healthy human donors was measured. The IgG3 concentration of detected samples was determined to be 143.38 ng/mL with a range of 28.55-370.13 ng/mL.



Urine of six individual healthy human donors was measured. The IgG3 concentration of detected samples was determined to be 168.77 ng/mL with a range of 66.33-367.03 ng/mL.



Sandwich ELISA standard curve of MP02949-2, Human IgG3 Recombinant Matched Antibody Pair - PBS only. 87288-4-PBS was coated to a plate as the capture antibody and incubated with serial dilutions of standard Eg6674. 87288-3-PBS was HRP conjugated as the detection antibody. Range: 0.313-20 ng/mL.