

For Research Use Only

Phospho-LAT (Tyr220) Recombinant monoclonal antibody

Catalog Number:87289-1-RR



Basic Information

Catalog Number: 87289-1-RR	GenBank Accession Number: BC011563	Purification Method: Protein A purification
Size: 100ul , Concentration: 1000 µg/ml by Nanodrop;	GeneID (NCBI): 27040	CloneNo.: 252580D5
Source: Rabbit	UNIPROT ID: O43561	Recommended Dilutions: WB: 1:1000-1:8000
Isotype: IgG	Full Name: linker for activation of T cells	
	Calculated MW: 262 aa, 28 kDa	
	Observed MW: 36 kDa, 38 kDa	

Applications

Tested Applications: WB, ELISA	Positive Controls: WB : Jurkat cells,
Species Specificity: human	

Background Information

LAT is a membrane-localized adaptor protein which is primarily concentrated in microdomains by palmitoylation. Phospho-LAT (Tyr220) is a phosphorylated form of the Linker for Activation of T cells (LAT), a protein that plays a pivotal role in T cell receptor (TCR) signaling. LAT is involved in the assembly of the signaling complex that leads to T cell activation. Upon TCR engagement, LAT becomes phosphorylated at multiple tyrosine residues, including Tyr220. (PMID: 38746248)

Storage

Storage:
Store at -20°C. Stable for one year after shipment.
Storage Buffer:
PBS with 0.02% sodium azide and 50% glycerol, pH7.3
Aliquoting is unnecessary for -20°C storage

*** 20ul sizes contain 0.1% BSA

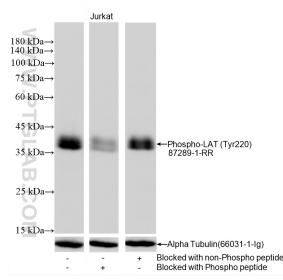
For technical support and original validation data for this product please contact:

T: 1 (888) 4PTGLAB (1-888-478-4522) (toll free in USA), or 1(312) 455-8498 (outside USA)

E: proteintech@ptglab.com
W: ptglab.com

This product is exclusively available under Proteintech Group brand and is not available to purchase from any other manufacturer.

Selected Validation Data



Jurkat cell lysates were subjected to SDS PAGE followed by western blot with 87289-1-RR (Phospho-LAT (Tyr220) antibody) blocked with BSA only, Phospho-LAT (Tyr220) peptide or non-Phospho peptide were subjected to SDS PAGE followed by western blot with 87289-1-RR (LAT-Tyr220 antibody) at dilution of 1:4000 incubated at room temperature for 1.5 hours.