

For Research Use Only

Human IgG4 Recombinant monoclonal antibody, PBS Only (Detector)

Catalog Number:87290-13-PBS



Basic Information

Catalog Number: 87290-13-PBS	GenBank Accession Number: 3503	Purification Method: Protein A purification
Size: 100ug , Concentration: 1 mg/ml by Nanodrop;	GeneID (NCBI): 3503	CloneNo.: 251291C6
Source: Rabbit	Full Name: immunoglobulin heavy constant gamma 4 (G4m marker)	
Isotype: IgG		
Immunogen Catalog Number: EG6675		

Applications

Tested Applications:
Sandwich ELISA, Indirect ELISA

Species Specificity:
human

Product Information

87290-13-PBS targets Human IgG4 as part of a matched antibody pair:

MP02951-2: 87290-8-PBS capture and 87290-13-PBS detection (validated in Sandwich ELISA)

Unconjugated rabbit recombinant monoclonal antibody in PBS only (BSA and azide free) storage buffer at a concentration of 1 mg/mL, ready for conjugation. Created using Proteintech's proprietary in-house recombinant technology. Recombinant production enables unrivalled batch-to-batch consistency, easy scale-up, and future security of supply.

This conjugation ready format makes antibodies ideal for use in many applications including: ELISAs, multiplex assays requiring matched pairs, mass cytometry, and multiplex imaging applications. Antibody use should be optimized by the end user for each application and assay.

Storage

Storage:
Store at -80°C.

Storage Buffer:
PBS only, pH7.3

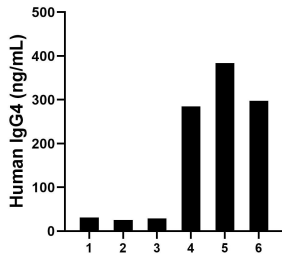
For technical support and original validation data for this product please contact:

T: 1 (888) 4PTGLAB (1-888-478-4522) (toll free in USA), or 1(312) 455-8498 (outside USA)

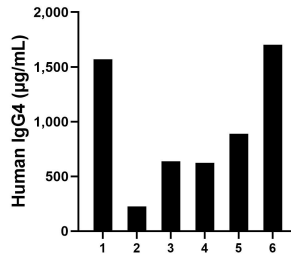
E: proteintech@ptglab.com
W: ptglab.com

This product is exclusively available under Proteintech Group brand and is not available to purchase from any other manufacturer.

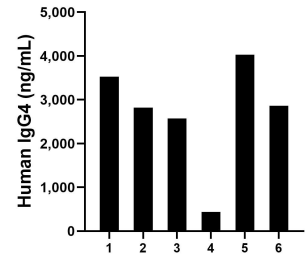
Selected Validation Data



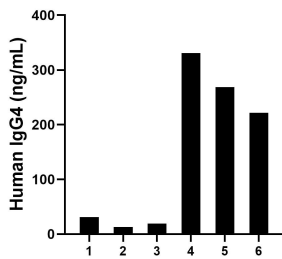
Saliva of six individual healthy human donors was measured. The human IgG4 concentration of detected samples was determined to be 175.21 ng/mL with a range of 25.29 - 383.71 ng/mL.



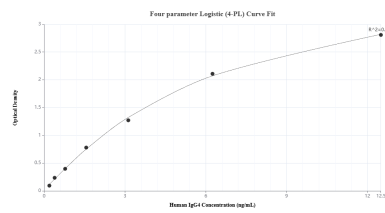
Plasma of six individual healthy human donors was measured. The human IgG4 concentration of detected samples was determined to be 941.42 µg/mL with a range of 225.54 - 1,701.22 µg/mL.



Human milk of six individual healthy human donors was measured. The human IgG4 concentration of detected samples was determined to be 2,708.86 ng/mL with a range of 439.50 - 4,028.35 ng/mL.



Urine of six individual healthy human donors was measured. The human IgG4 concentration of detected samples was determined to be 147.44 ng/mL with a range of 12.85 - 331.11 ng/mL.



Sandwich ELISA standard curve of MP02951-2, Human IgG4 Recombinant Matched Antibody Pair - PBS only. 87290-8-PBS was coated to a plate as the capture antibody and incubated with serial dilutions of standard Eg6675. 87290-13-PBS was HRP conjugated as the detection antibody. Range: 0.195-12.5 ng/mL.