

For Research Use Only

# Human IgG4 Recombinant monoclonal antibody, PBS Only (Capture)

Catalog Number:87290-8-PBS



## Basic Information

Catalog Number:

87290-8-PBS

Size:

100ug , Concentration: 1 mg/ml by Nanodrop;

Source:

Rabbit

Isotype:

IgG

Immunogen Catalog Number:

EG6675

GenBank Accession Number:

GeneID (NCBI):

3503

Full Name:

immunoglobulin heavy constant gamma 4 (G4m marker)

Purification Method:

Protein A purification

CloneNo.:

251291E10

## Applications

Tested Applications:

Sandwich ELISA, Indirect ELISA

Species Specificity:

human

## Product Information

87290-8-PBS targets Human IgG4 as part of a matched antibody pair:

MP02951-2: 87290-8-PBS capture and 87290-13-PBS detection (validated in Sandwich ELISA)

Unconjugated rabbit recombinant monoclonal antibody in PBS only (BSA and azide free) storage buffer at a concentration of 1 mg/mL, ready for conjugation. Created using Proteintech's proprietary in-house recombinant technology. Recombinant production enables unrivalled batch-to-batch consistency, easy scale-up, and future security of supply.

This conjugation ready format makes antibodies ideal for use in many applications including: ELISAs, multiplex assays requiring matched pairs, mass cytometry, and multiplex imaging applications. Antibody use should be optimized by the end user for each application and assay.

## Storage

Storage:

Store at -80°C.

Storage Buffer:

PBS only, pH7.3

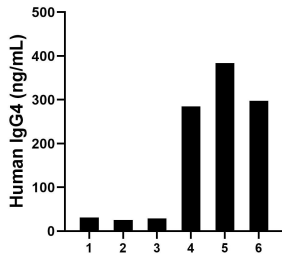
For technical support and original validation data for this product please contact:

T: 1 (888) 4PTGLAB (1-888-478-4522) (toll free in USA), or 1(312) 455-8498 (outside USA)

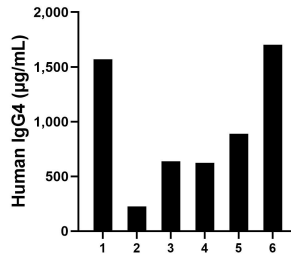
E: [proteintech@ptglab.com](mailto:proteintech@ptglab.com)  
W: [ptglab.com](http://ptglab.com)

**This product is exclusively available under Proteintech Group brand and is not available to purchase from any other manufacturer.**

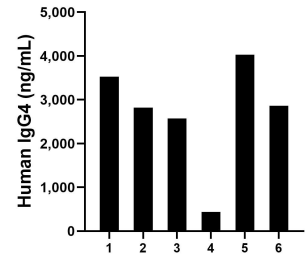
## Selected Validation Data



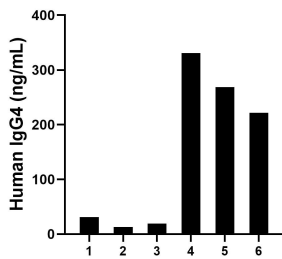
Saliva of six individual healthy human donors was measured. The human IgG4 concentration of detected samples was determined to be 175.21 ng/mL with a range of 25.29 - 383.71 ng/mL.



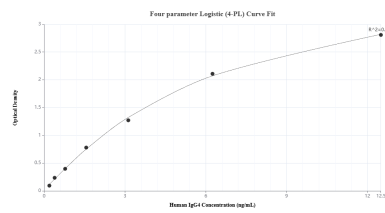
Plasma of six individual healthy human donors was measured. The human IgG4 concentration of detected samples was determined to be 941.42 µg/mL with a range of 225.54 - 1,701.22 µg/mL.



Human milk of six individual healthy human donors was measured. The human IgG4 concentration of detected samples was determined to be 2,708.86 ng/mL with a range of 439.50 - 4,028.35 ng/mL.



Urine of six individual healthy human donors was measured. The human IgG4 concentration of detected samples was determined to be 147.44 ng/mL with a range of 12.85 - 331.11 ng/mL.



Sandwich ELISA standard curve of MP02951-2, Human IgG4 Recombinant Matched Antibody Pair - PBS only. 87290-8-PBS was coated to a plate as the capture antibody and incubated with serial dilutions of standard Eg6675. 87290-13-PBS was HRP conjugated as the detection antibody. Range: 0.195-12.5 ng/mL