

For Research Use Only

# Phospho-SYN1 (Ser9) Recombinant monoclonal antibody

Catalog Number:87293-2-RR



## Basic Information

**Catalog Number:**

87293-2-RR

**Size:**

100ul , Concentration: 1000 µg/ml by Nanodrop;

**Source:**

Rabbit

**Isotype:**

IgG

**GenBank Accession Number:**

NM\_006950

**GeneID (NCBI):**

6853

**UNIPROT ID:**

P17600

**Full Name:**

synapsin I

**Calculated MW:**

74 kDa

**Observed MW:**

77 kDa

**Purification Method:**

Protein A purification

**CloneNo.:**

252630C2

**Recommended Dilutions:**

WB: 1:5000-1:50000

## Applications

**Tested Applications:**

WB, ELISA

**Species Specificity:**

human, mouse

**Positive Controls:**

WB : mouse brain tissue,

## Background Information

SYN1, also named Brain protein 4.1, belongs to the synapsin family. Phospho-SYN1 (Ser9) is a phosphorylated form of Synapsin 1 (SYN1) at serine residue 9, which plays a significant role in the regulation of synaptic vesicle dynamics. The phosphorylation of Syn1 at this site is induced by action potentiation, leading to the disassociation of Syn1 with its interacting proteins and the subsequent release of synaptic vesicles (SVs).

## Storage

**Storage:**

Store at -20°C. Stable for one year after shipment.

**Storage Buffer:**

PBS with 0.02% sodium azide and 50% glycerol, pH7.3

Aliquoting is unnecessary for -20°C storage

\*\*\* 20ul sizes contain 0.1% BSA

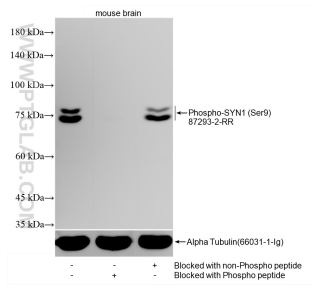
For technical support and original validation data for this product please contact:

T: 1 (888) 4PTGLAB (1-888-478-4522) (toll free in USA), or 1(312) 455-8498 (outside USA)

E: [proteintech@ptglab.com](mailto:proteintech@ptglab.com)  
W: [ptglab.com](http://ptglab.com)

This product is exclusively available under Proteintech Group brand and is not available to purchase from any other manufacturer.

## Selected Validation Data



mouse brain tissue were subjected to SDS PAGE followed by western blot with 87293-2-RR (Phospho-SYN1 (Ser9) antibody) blocked with BSA only, Phospho-SYN1 (Ser9) peptide or non-Phospho peptide at dilution of 1:40000 incubated at room temperature for 1.5 hours.