

For Research Use Only

Phospho-ITPR1 (Ser1764) Recombinant monoclonal antibody, PBS Only

Catalog Number: 87294-1-PBS



Basic Information

Catalog Number:

87294-1-PBS

Size:

100ug, Concentration: 1 mg/ml by Nanodrop;

Source:

Rabbit

Isotype:

IgG

GenBank Accession Number:

NM_001378452

GeneID (NCBI):

3708

UNIPROT ID:

Q14643

Full Name:

inositol 1,4,5-triphosphate receptor, type 1

Calculated MW:

314 kDa

Observed MW:

320 kDa

Purification Method:

Protein A purification

CloneNo.:

252582D10

Applications

Tested Applications:

WB, Indirect ELISA

Species Specificity:

human, mouse, rat

Background Information

ITPR1, also named as INSP3R1 and IP3R, belongs to the InsP3 receptor family. Phospho-ITPR1 (Thr853) is a phosphorylated form of the inositol-trisphosphate receptor type 1 (ITPR1) protein at threonine residue 853. This phosphorylation site is involved in the regulation of calcium signaling pathways within cells. The specific function and role of Thr853 phosphorylation in ITPR1's activity are not detailed in the provided resources, but phosphorylation events on ITPR1 are known to influence its function, which affects calcium release from the endoplasmic reticulum. Calcium signaling is critical for various cellular processes, including muscle contraction, neurotransmitter release, and cellular division. This antibody is equivalent to Ser1756 in rat.

Storage

Storage:

Store at -80°C.

Storage Buffer:

PBS only, pH7.3

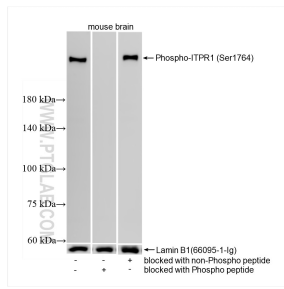
For technical support and original validation data for this product please contact:

T: 1 (888) 4PTGLAB (1-888-478-4522) (toll free in USA), or 1(312) 455-8498 (outside USA)

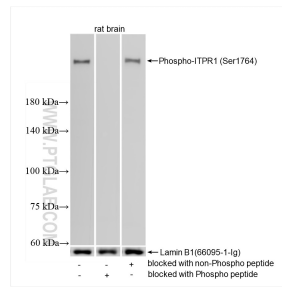
E: proteintech@ptglab.com
W: ptglab.com

This product is exclusively available under Proteintech Group brand and is not available to purchase from any other manufacturer.

Selected Validation Data



mouse brain tissue were subjected to SDS PAGE followed by western blot with 87294-1-RR (Phospho-ITPR1 (Ser1764) antibody) blocked with BSA only, Phospho-ITPR1 (Ser1764) peptide or non-Phospho peptide at dilution of 1:10000 incubated at room temperature for 1.5 hours. This data was developed using the same antibody clone with 87294-1-PBS in a different storage buffer formulation.



rat brain tissue were subjected to SDS PAGE followed by western blot with 87294-1-RR (Phospho-ITPR1 (Ser1764) antibody) blocked with BSA only, Phospho-ITPR1 (Ser1764) peptide or non-Phospho peptide at dilution of 1:10000 incubated at room temperature for 1.5 hours. This data was developed using the same antibody clone with 87294-1-PBS in a different storage buffer formulation.