

For Research Use Only

# Phospho-ITPR1 (Ser1764) Recombinant monoclonal antibody

Catalog Number: 87294-1-RR



## Basic Information

<b>Catalog Number:</b> 87294-1-RR	<b>GenBank Accession Number:</b> NM_001378452	<b>Purification Method:</b> Protein A purification
<b>Size:</b> 100ul , Concentration: 1000 µg/ml by Nanodrop;	<b>GeneID (NCBI):</b> 3708	<b>CloneNo.:</b> 252582D10
<b>Source:</b> Rabbit	<b>UNIPROT ID:</b> Q14643	<b>Recommended Dilutions:</b> WB: 1:5000-1:50000
<b>Isotype:</b> IgG	<b>Full Name:</b> inositol 1,4,5-triphosphate receptor, type 1	
	<b>Calculated MW:</b> 314 kDa	
	<b>Observed MW:</b> 320 kDa	

## Applications

<b>Tested Applications:</b> WB, ELISA	<b>Positive Controls:</b> WB : mouse brain tissue, rat brain tissue
<b>Species Specificity:</b> human, mouse, rat	

## Background Information

ITPR1, also named as INSP3R1 and IP3R, belongs to the InsP3 receptor family. Phospho-ITPR1 (Thr853) is a phosphorylated form of the inositol-trisphosphate receptor type 1 (ITPR1) protein at threonine residue 853. This phosphorylation site is involved in the regulation of calcium signaling pathways within cells. The specific function and role of Thr853 phosphorylation in ITPR1's activity are not detailed in the provided resources, but phosphorylation events on ITPR1 are known to influence its function, which affects calcium release from the endoplasmic reticulum. Calcium signaling is critical for various cellular processes, including muscle contraction, neurotransmitter release, and cellular division. This antibody is equivalent to Ser1756 in rat.

## Storage

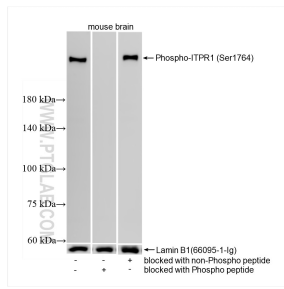
**Storage:**  
Store at -20°C. Stable for one year after shipment.  
**Storage Buffer:**  
PBS with 0.02% sodium azide and 50% glycerol, pH7.3  
Aliquoting is unnecessary for -20°C storage

\*\*\* 20ul sizes contain 0.1% BSA

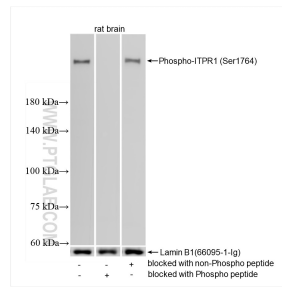
For technical support and original validation data for this product please contact:  
T: 1 (888) 4PTGLAB (1-888-478-4522) (toll free in USA), or 1(312) 455-8498 (outside USA)  
E: proteintech@ptglab.com  
W: ptglab.com

This product is exclusively available under Proteintech Group brand and is not available to purchase from any other manufacturer.

## Selected Validation Data



mouse brain tissue were subjected to SDS PAGE followed by western blot with 87294-1-RR (Phospho-ITPR1 (Ser1764) antibody) blocked with BSA only, Phospho-ITPR1 (Ser1764) peptide or non-Phospho peptide at dilution of 1:10000 incubated at room temperature for 1.5 hours.



rat brain tissue were subjected to SDS PAGE followed by western blot with 87294-1-RR (Phospho-ITPR1 (Ser1764) antibody) blocked with BSA only, Phospho-ITPR1 (Ser1764) peptide or non-Phospho peptide at dilution of 1:10000 incubated at room temperature for 1.5 hours.