

For Research Use Only

PALMD Recombinant monoclonal antibody

Catalog Number: 87300-3-RR



Basic Information

Catalog Number: 87300-3-RR	GenBank Accession Number: BC012570	Purification Method: Protein A purification
Size: 100ul , Concentration: 1000 µg/ml by Nanodrop;	GeneID (NCBI): 54873	CloneNo.: 252551B4
Source: Rabbit	UNIPROT ID: Q9NP74	Recommended Dilutions: WB: 1:5000-1:50000 IP: 0.5-4.0 ug for 1.0-3.0 mg of total protein lysate
Isotype: IgG	Full Name: palmdelphin	
Immunogen Catalog Number: AG9796	Calculated MW: 551 aa, 63 kDa	
	Observed MW: 80 kDa	

Applications

Tested Applications: WB, ELISA	Positive Controls:
Species Specificity: human, mouse, rat	WB : HeLa cells, mouse lung tissue, L02 cells, HUVEC cells, rat lung tissue
	IP : HeLa cells,

Background Information

Palmdelphin, encoded by PALMD gene, is a newly identified cytosolic isoform of paralemmin-1, a lipid raft-associated protein implicated in cell shape control. Paralemmin (Palm) is a prenyl-palmitoyl anchored membrane protein that can drive membrane and process formation in neurons. Previous finding suggest that palmdelphin may peripherally associate with endomembranes or cytoskeleton-linked structures. Palmdelphin appears to be 80 kDa in Western blotting, larger than the predicated of 63 kDa, and this may be due to the acidic nature of this protein or its posttranslational modification.

Storage

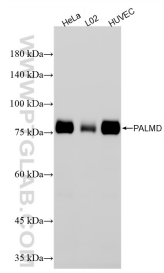
Storage:
Store at -20°C. Stable for one year after shipment.
Storage Buffer:
PBS with 0.02% sodium azide and 50% glycerol, pH7.3
Aliquoting is unnecessary for -20°C storage

*** 20ul sizes contain 0.1% BSA

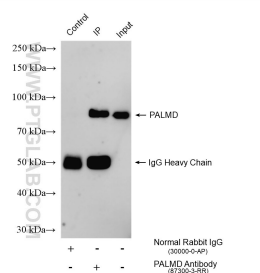
For technical support and original validation data for this product please contact:
T: 1 (888) 4PTGLAB (1-888-478-4522) (toll free in USA), or 1(312) 455-8498 (outside USA)
E: proteintech@ptglab.com
W: ptglab.com

This product is exclusively available under Proteintech Group brand and is not available to purchase from any other manufacturer.

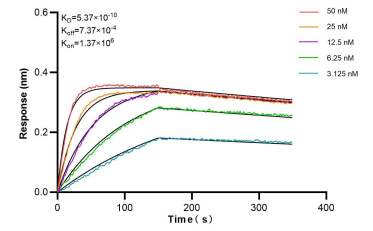
Selected Validation Data



Various lysates were subjected to SDS PAGE followed by western blot with 87300-3-RR (PALMD antibody) at dilution of 1:10000 incubated at room temperature for 1.5 hours.



IP result of anti-PALMD (IP:87300-3-RR, 4ug; Detection:87300-3-RR 1:2000) with HeLa cells lysate 1320 ug.



Bi-layer interferometry (BLI) kinetic assays of 87300-3-RR against Human PALMD were performed. The affinity constant is 0.537 nM.