

For Research Use Only

ATP6V1B2 Recombinant monoclonal antibody, PBS Only

Catalog Number:87302-4-PBS



Basic Information

Catalog Number: 87302-4-PBS	GenBank Accession Number: BC003100	Purification Method: Protein A purification
Size: 100ug , Concentration: 1 mg/ml by Nanodrop;	GeneID (NCBI): 526	CloneNo.: 252572H5
Source: Rabbit	UNIPROT ID: P21281	
Isotype: IgG	Full Name: ATPase, H ⁺ transporting, lysosomal 56/58kDa, V1 subunit B2	
Immunogen Catalog Number: AG7174	Calculated MW: 57 kDa	
	Observed MW: 56-58 kDa	

Applications

Tested Applications:
WB, IF/ICC, Indirect ELISA

Species Specificity:
human, mouse, rat

Background Information

ATP6V1B2(V-type proton ATPase subunit B, brain isoform) is also named as ATP6B2, VPP3,HO57. It belongs to the ATPase alpha/beta chains family.V-ATPase is a heteromultimeric enzyme composed of a peripheral catalytic V1 complex attached to an integral membrane V0 proton pore complex.The quasi-ubiquitous ATP6V1B2 is one of 2 isoforms of ATP6V1 and is expressed in most cell types, where it plays a major role in organelle acidification (PMID:18667600).

Storage

Storage:
Store at -80°C.

Storage Buffer:
PBS only, pH7.3

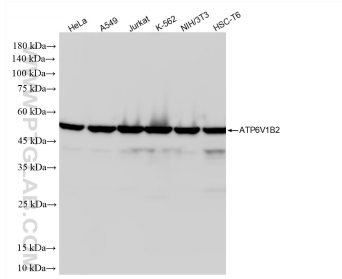
For technical support and original validation data for this product please contact:

T: 1 (888) 4PTGLAB (1-888-478-4522) (toll free in USA), or 1(312) 455-8498 (outside USA)

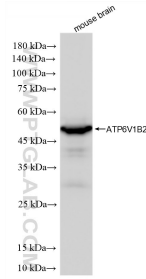
E: proteintech@ptglab.com
W: ptglab.com

This product is exclusively available under Proteintech Group brand and is not available to purchase from any other manufacturer.

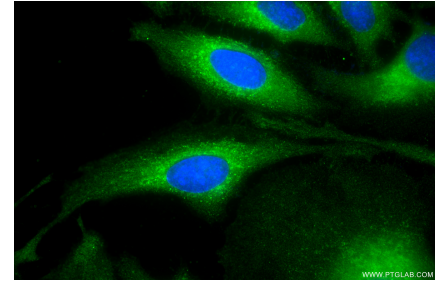
Selected Validation Data



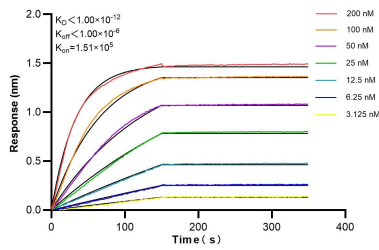
Various lysates were subjected to SDS PAGE followed by western blot with 87302-4-RR (ATP6V1B2 antibody) at dilution of 1:10000 incubated at room temperature for 1.5 hours. This data was developed using the same antibody clone with 87302-4-PBS in a different storage buffer formulation.



mouse brain tissue were subjected to SDS PAGE followed by western blot with 87302-4-RR (ATP6V1B2 antibody) at dilution of 1:10000 incubated at room temperature for 1.5 hours. This data was developed using the same antibody clone with 87302-4-PBS in a different storage buffer formulation.



Immunofluorescent analysis of (-20°C Methanol) fixed HeLa cells using ATP6V1B2 antibody (87302-4-RR, Clone: 252572H5) at dilution of 1:500 and CoraLite®488-Conjugated Goat Anti-Rabbit IgG(H+L) (SA00013-2). This data was developed using the same antibody clone with 87302-4-PBS in a different storage buffer formulation.



Biolayer interferometry (BLI) kinetic assays of 87302-4-RR against Human ATP6V1B2 were performed. The affinity constant is below 1 pM.