

For Research Use Only

ATP6V1B2 Recombinant monoclonal antibody

Catalog Number: 87302-4-RR



Basic Information

Catalog Number: 87302-4-RR	GenBank Accession Number: BC003100	Purification Method: Protein A purification
Size: 100ul , Concentration: 1000 µg/ml by Nanodrop;	GeneID (NCBI): 526	CloneNo.: 252572H5
Source: Rabbit	UNIPROT ID: P21281	Recommended Dilutions: WB: 1:5000-1:50000 IF/ICC: 1:250-1:1000
Isotype: IgG	Full Name: ATPase, H ⁺ transporting, lysosomal 56/58kDa, V1 subunit B2	
Immunogen Catalog Number: AG7174	Calculated MW: 57 kDa	
	Observed MW: 56-58 kDa	

Applications

Tested Applications: WB, IF/ICC, ELISA	Positive Controls:
Species Specificity: human, mouse, rat	WB : mouse brain tissue, HeLa cells, A549 cells, Jurkat cells, K-562 cells, NIH/3T3 cells, HSC-T6 cells
	IF/ICC : HeLa cells,

Background Information

ATP6V1B2(V-type proton ATPase subunit B, brain isoform) is also named as ATP6B2, VPP3,HO57. It belongs to the ATPase alpha/beta chains family.V-ATPase is an heteromultimeric enzyme composed of a peripheral catalytic V1 complex attached to an integral membrane V0 proton pore complex.The quasi-ubiquitous ATP6V1B2 is one of 2 isoforms of ATP6V1 and is expressed in most cell types, where it plays a major role in organelle acidification (PMID:18667600).

Storage

Storage:
Store at -20°C. Stable for one year after shipment.
Storage Buffer:
PBS with 0.02% sodium azide and 50% glycerol, pH7.3
Aliquoting is unnecessary for -20°C storage

*** 20ul sizes contain 0.1% BSA

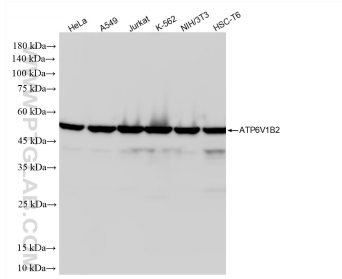
For technical support and original validation data for this product please contact:

T: 1 (888) 4PTGLAB (1-888-478-4522) (toll free in USA), or 1(312) 455-8498 (outside USA)

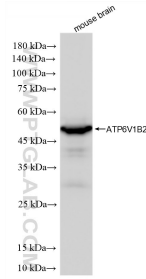
E: proteintech@ptglab.com
W: ptglab.com

This product is exclusively available under Proteintech Group brand and is not available to purchase from any other manufacturer.

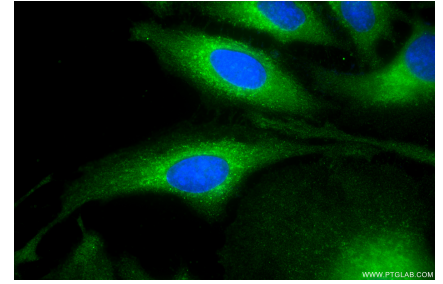
Selected Validation Data



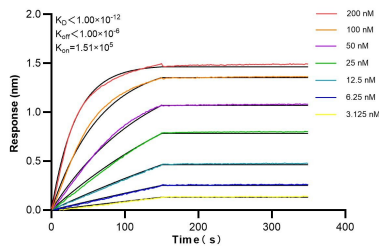
Various lysates were subjected to SDS PAGE followed by western blot with 87302-4-RR (ATP6V1B2 antibody) at dilution of 1:10000 incubated at room temperature for 1.5 hours.



mouse brain tissue were subjected to SDS PAGE followed by western blot with 87302-4-RR (ATP6V1B2 antibody) at dilution of 1:10000 incubated at room temperature for 1.5 hours.



Immunofluorescent analysis of (-20°C Methanol) fixed HeLa cells using ATP6V1B2 antibody (87302-4-RR, Clone: 252572H5) at dilution of 1:500 and CoraLite® 488-Conjugated Goat Anti-Rabbit IgG(H+L) (SA00013-2).



Biolayer interferometry (BLI) kinetic assays of 87302-4-RR against Human ATP6V1B2 were performed. The affinity constant is below 1 pM.