

For Research Use Only

# Phospho-KAP1 (Ser824) Recombinant monoclonal antibody

Catalog Number:87309-1-RR



## Basic Information

**Catalog Number:**

87309-1-RR

**Size:**

100ul , Concentration: 1000 µg/ml by Nanodrop;

**Source:**

Rabbit

**Isotype:**

IgG

**GenBank Accession Number:**

NM\_005762

**GeneID (NCBI):**

10155

**UNIPROT ID:**

Q13263

**Full Name:**

tripartite motif-containing 28

**Calculated MW:**

89 kDa

**Observed MW:**

110 kDa

**Purification Method:**

Protein A purification

**CloneNo.:**

252561H1

**Recommended Dilutions:**

WB: 1:1000-1:6000

IF/ICC: 1:250-1:1000

## Applications

**Tested Applications:**

WB, IF/ICC, ELISA

**Species Specificity:**

human, mouse

**Positive Controls:**

WB : etoposide treated NIH/3T3 cells,

IF/ICC : NIH/3T3 cells, etoposide treated NIH/3T3 cells

## Background Information

KAP1, also named as TRIM28 or RNF96, is a 835 amino acid protein, which contain one RING-type zinc finger, one PHD-type zinc finger, one bromo domain and two B box-type zinc fingers. Phospho-KAP1 (Ser824) refers to the phosphorylated form of KAP1 (KRAB-associated protein 1) at Serine 824. This post-translational modification plays a significant role in the regulation of gene expression and chromatin structure.

## Storage

**Storage:**

Store at -20°C. Stable for one year after shipment.

**Storage Buffer:**

PBS with 0.02% sodium azide and 50% glycerol, pH7.3

Aliquoting is unnecessary for -20°C storage

\*\*\* 20ul sizes contain 0.1% BSA

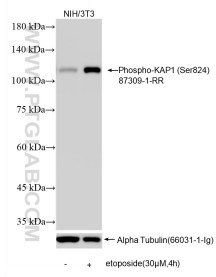
For technical support and original validation data for this product please contact:

T: 1 (888) 4PTGLAB (1-888-478-4522) (toll free in USA), or 1(312) 455-8498 (outside USA)

E: [proteintech@ptglab.com](mailto:proteintech@ptglab.com)  
W: [ptglab.com](http://ptglab.com)

This product is exclusively available under Proteintech Group brand and is not available to purchase from any other manufacturer.

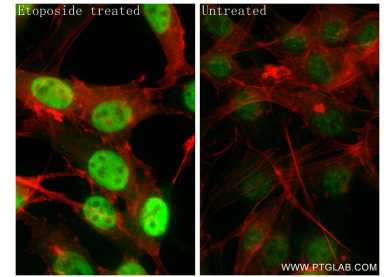
## Selected Validation Data



Non-treated NIH/3T3 cells and etoposide treated NIH/3T3 cells were subjected to SDS PAGE followed by western blot with 87309-1-RR (Phospho-KAP1 (Ser824) antibody) at dilution of 1:3000 incubated at room temperature for 1.5 hours. The membrane was stripped and re-blotted with Alpha Tubulin (66031-1-Ig) antibody as a loading control.



Immunofluorescent analysis of (4% PFA) fixed etoposide treated NIH/3T3 cells using Phospho-KAP1 (Ser824) antibody (87309-1-RR, Clone: 252561H1) at dilution of 1:500 and CoraLite®488-Conjugated Goat Anti-Rabbit IgG(H+L) (SA00013-2), CL594-Phalloidin (red).



Immunofluorescent analysis of (4% PFA) fixed NIH/3T3 cells using Phospho-KAP1 (Ser824) antibody (87309-1-RR, Clone: 252561H1) at dilution of 1:500 and CoraLite®488-Conjugated Goat Anti-Rabbit IgG(H+L) (SA00013-2), CL594-Phalloidin (red).