

For Research Use Only

Mouse CD316/IGSF8 Recombinant monoclonal antibody, PBS Only (Capture)

Catalog Number: 87310-1-PBS



Basic Information

Catalog Number: 87310-1-PBS	GenBank Accession Number: AF439263.1	Purification Method: Protein A purification
Size: 100ug, Concentration: 1 mg/ml by Nanodrop;	GeneID (NCBI): 140559	CloneNo.: 252500B3
Source: Rabbit	UNIPROT ID: Q8R366	
Isotype: IgG	Full Name: immunoglobulin superfamily, member 8	
Immunogen Catalog Number: EG6320	Calculated MW: 65 kDa	
	Observed MW: 70 kDa	

Applications

Tested Applications:
WB, IF/ICC, Cytometric bead array, Indirect ELISA

Species Specificity:
mouse, rat

Product Information

87310-1-PBS targets CD316/IGSF8 as part of a matched antibody pair:

MP02958-1: 87310-1-PBS capture and 87310-2-PBS detection (validated in Cytometric bead array)

Unconjugated rabbit recombinant monoclonal antibody in PBS only (BSA and azide free) storage buffer at a concentration of 1 mg/mL, ready for conjugation. Created using Proteintech's proprietary in-house recombinant technology. Recombinant production enables unrivalled batch-to-batch consistency, easy scale-up, and future security of supply.

This conjugation ready format makes antibodies ideal for use in many applications including: ELISAs, multiplex assays requiring matched pairs, mass cytometry, and multiplex imaging applications. Antibody use should be optimized by the end user for each application and assay.

Background Information

IGSF8 is also known as CD316, PGRL (PG regulatory-like protein), KAI/CD82-associated surface molecule, and CD81-binding partner 3 (CD81P3). IGSF8 contains four immunoglobulin domains, a transmembrane region, and a short cytoplasmic tail that does not bear any signature motif for signal transduction. IGSF8 is abundantly expressed in olfactory sensory neurons (OSN) axons and their developing synapses. (PMID: 17785435, PMID: 22687584)

Storage

Storage:
Store at -80°C.

Storage Buffer:
PBS only, pH7.3

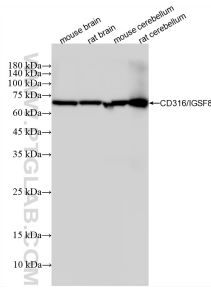
For technical support and original validation data for this product please contact:

T: 1 (888) 4PTGLAB (1-888-478-4522) (toll free in USA), or 1(312) 455-8498 (outside USA)

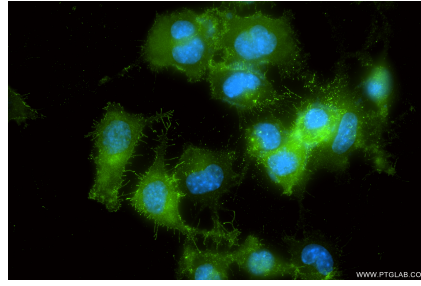
E: proteintech@ptglab.com
W: ptglab.com

This product is exclusively available under Proteintech Group brand and is not available to purchase from any other manufacturer.

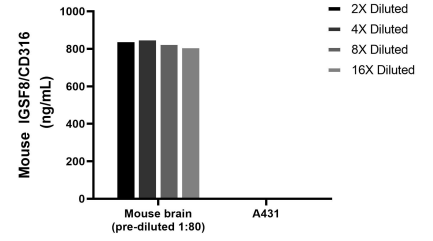
Selected Validation Data



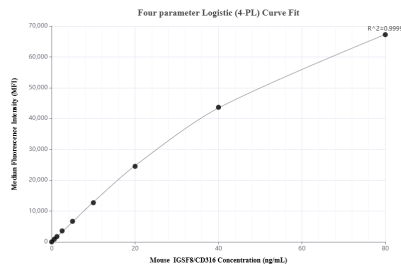
Various lysates were subjected to SDS PAGE followed by western blot with 87310-1-RR (CD316/IGSF8 antibody) at dilution of 1:10000 incubated at room temperature for 1.5 hours. This data was developed using the same antibody clone with 87310-1-PBS in a different storage buffer formulation.



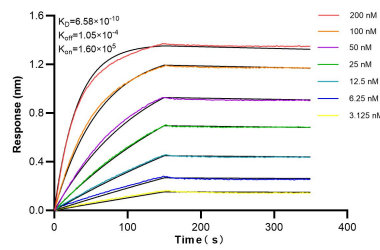
Immunofluorescent analysis of (4% PFA) fixed Neuro-2a cells using CD316/IGSF8 antibody (87310-1-RR, Clone: 252500B3) at dilution of 1:200 and CoraLite® 488-Conjugated Goat Anti-Rabbit IgG(H+L) (SA00013-2). This data was developed using the same antibody clone with 87310-1-PBS in a different storage buffer formulation.



The mean IGSF8/CD316 concentration was determined to be 865.1 ng/mL in mouse brain tissue extract based on a 2.2 mg/mL extract load, A431 cell extract were served as a negative control.



Cytometric bead array standard curve of MP02958-1, MOUSE IGSF8/CD316 Recombinant Matched Antibody Pair, PBS Only. Capture antibody: 87310-1-PBS. Detection antibody: 87310-2-PBS. Standard: Eg6320. Range: 0.625-80 ng/mL.



Biolayer interferometry (BLI) kinetic assays of 87310-1-RR against Mouse CD316/IGSF8 were performed. The affinity constant is 0.658 nM.