

For Research Use Only

INPP5F Recombinant monoclonal antibody, PBS Only (Detector)

Catalog Number: 87311-1-PBS



Basic Information

Catalog Number: 87311-1-PBS	GenBank Accession Number: BC111493	Purification Method: Protein A purification
Size: 100ug , Concentration: 1 mg/ml by Nanodrop;	GeneID (NCBI): 22876	CloneNo.: 252661F2
Source: Rabbit	UNIPROT ID: Q9Y2H2	
Isotype: IgG	Full Name: inositol polyphosphate-5-phosphatase F	
Immunogen Catalog Number: AG39933	Calculated MW: 1132 aa, 128 kDa	
	Observed MW: 128-140 kDa	

Applications

Tested Applications:
WB, Sandwich ELISA, Indirect ELISA

Species Specificity:
human, mouse, rat

Product Information

87311-1-PBS targets INPP5F as part of a matched antibody pair:

MP02978-2: 87311-4-PBS capture and 87311-1-PBS detection (validated in Sandwich ELISA)

Unconjugated rabbit recombinant monoclonal antibody in PBS only (BSA and azide free) storage buffer at a concentration of 1 mg/mL, ready for conjugation. Created using Proteintech's proprietary in-house recombinant technology. Recombinant production enables unrivalled batch-to-batch consistency, easy scale-up, and future security of supply.

This conjugation ready format makes antibodies ideal for use in many applications including: ELISAs, multiplex assays requiring matched pairs, mass cytometry, and multiplex imaging applications. Antibody use should be optimized by the end user for each application and assay.

Background Information

INPP5F can negatively regulates STAT3 signaling pathway through inhibition of STAT3 phosphorylation and translocation to the nucleus.

Storage

Storage:
Store at -80°C.

Storage Buffer:
PBS only, pH7.3

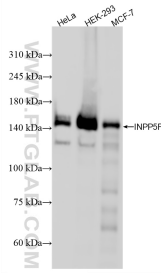
For technical support and original validation data for this product please contact:

T: 1 (888) 4PTGLAB (1-888-478-4522) (toll free in USA), or 1(312) 455-8498 (outside USA)

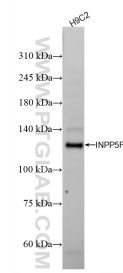
E: proteintech@ptglab.com
W: ptglab.com

This product is exclusively available under Proteintech Group brand and is not available to purchase from any other manufacturer.

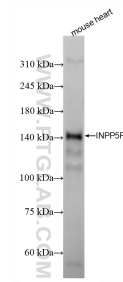
Selected Validation Data



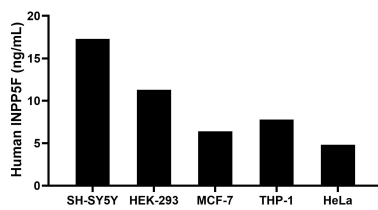
Various lysates were subjected to SDS PAGE followed by western blot with 87311-1-RR (INPP5F antibody) at dilution of 1:2000 incubated at room temperature for 1.5 hours. This data was developed using the same antibody clone with 87311-1-PBS in a different storage buffer formulation.



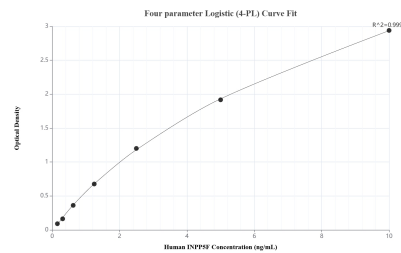
Various lysates were subjected to SDS PAGE followed by western blot with 87311-1-RR (INPP5F antibody) at dilution of 1:2000 incubated at room temperature for 1.5 hours. This data was developed using the same antibody clone with 87311-1-PBS in a different storage buffer formulation.



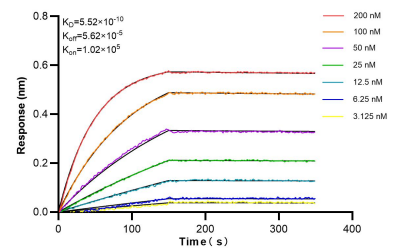
Various lysates were subjected to SDS PAGE followed by western blot with 87311-1-RR (INPP5F antibody) at dilution of 1:2000 incubated at room temperature for 1.5 hours. This data was developed using the same antibody clone with 87311-1-PBS in a different storage buffer formulation.



The mean INPP5F concentration was determined to be 17.30 ng/mL in SH-SY5Y cell extract based on a 1.20 mg/mL extract load, 11.30 ng/mL in HEK-293 cell extract based on a 1.20 mg/mL extract load, 6.40 ng/mL in MCF-7 cell extract based on a 1.20 mg/mL extract load, 7.80 ng/mL in THP-1 cell extract based on a 1.20 mg/mL extract load, and 4.80 ng/mL in HeLa cell extract based on a 1.20 mg/mL extract load.



Sandwich ELISA standard curve of MP02978-2, Human INPP5F Recombinant Matched Antibody Pair - PBS only. 87311-4-PBS was coated to a plate as the capture antibody and incubated with serial dilutions of standard Ag39933. 87311-1-PBS was HRP conjugated as the detection antibody. Range: 0.156-10 ng/mL.



Bi-layer interferometry (BLI) kinetic assays of 87311-1-RR against Human INPP5F were performed. The affinity constant is 0.552 nM.