

For Research Use Only

Annexin A1 Recombinant monoclonal antibody, PBS Only (Capture/Detector)

Catalog Number:87316-1-PBS



Basic Information

Catalog Number: 87316-1-PBS	GenBank Accession Number: NM_000700.3	Purification Method: Protein A purification
Size: 100ug , Concentration: 1 mg/ml by Nanodrop;	GeneID (NCBI): 301	CloneNo.: 251332C11
Source: Rabbit	UNIPROT ID: P04083	
Isotype: IgG	Full Name: annexin A1	
Immunogen Catalog Number: EG4503	Calculated MW: 39kDa	

Applications

Tested Applications:
Cytometric bead array, Sandwich ELISA, Indirect ELISA

Species Specificity:
human

Product Information

87316-1-PBS targets Annexin A1 as part of a matched antibody pair:

MP02960-1: 87316-2-PBS capture and 87316-1-PBS detection (validated in Cytometric bead array)

MP02960-2: 87316-1-PBS capture and 87316-4-PBS detection (validated in Sandwich ELISA)

Unconjugated rabbit recombinant monoclonal antibody in PBS only (BSA and azide free) storage buffer at a concentration of 1 mg/mL, ready for conjugation. Created using Proteintech's proprietary in-house recombinant technology. Recombinant production enables unrivalled batch-to-batch consistency, easy scale-up, and future security of supply.

This conjugation ready format makes antibodies ideal for use in many applications including: ELISAs, multiplex assays requiring matched pairs, mass cytometry, and multiplex imaging applications. Antibody use should be optimized by the end user for each application and assay.

Storage

Storage:
Store at -80°C.
Storage Buffer:
PBS only, pH7.3

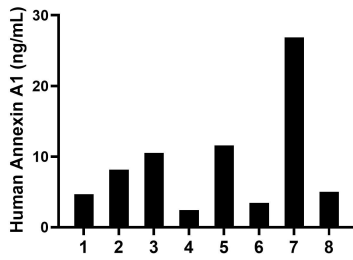
For technical support and original validation data for this product please contact:

T: 1 (888) 4PTGLAB (1-888-478-4522) (toll free in USA), or 1(312) 455-8498 (outside USA)

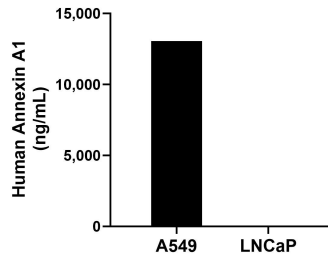
E: proteintech@ptglab.com
W: ptglab.com

This product is exclusively available under Proteintech Group brand and is not available to purchase from any other manufacturer.

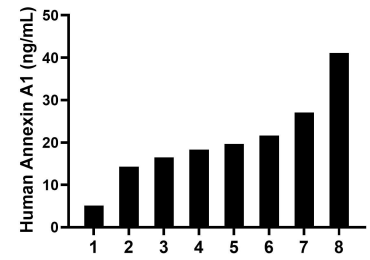
Selected Validation Data



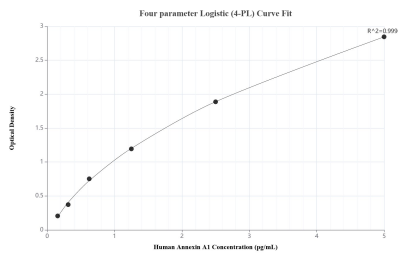
Serum of eight individual healthy human donors was measured. The Annexin A1 concentration of detected samples was determined to be 9.09 ng/mL with a range of 2.43-26.85 ng/mL.



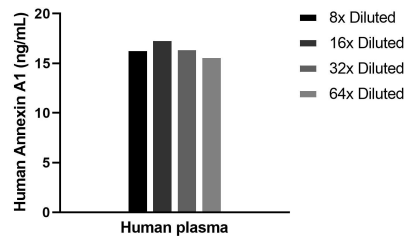
The mean Annexin A1 concentration was determined to be 13,051.00 ng/mL in A549 cell extract based on a 1.10 mg/mL extract load and 1.25 ng/mL in LNCaP cell extract based on a 1.20 mg/mL extract load.



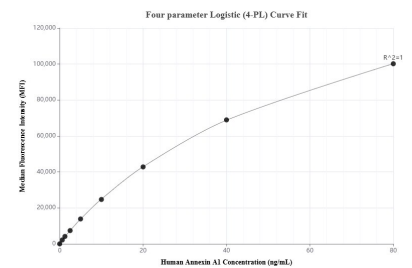
Plasma of eight individual healthy human donors was measured. The Annexin A1 concentration of detected samples was determined to be 20.45 ng/mL with a range of 5.09-41.09 ng/mL.



Sandwich ELISA standard curve of MP02960-2, Human Annexin A1 Recombinant Matched Antibody Pair - PBS only. 87316-1-PBS was coated to a plate as the capture antibody and incubated with serial dilutions of standard Eg4503. 87316-4-PBS was HRP conjugated as the detection antibody. Range: 156.3-5000 pg/mL.



The mean Annexin A1 concentration was determined to be 16.8 ng/mL in Human plasma.



Cytometric bead array standard curve of MP02960-1, Annexin A1 Recombinant Matched Antibody Pair, PBS Only. Capture antibody: 87316-2-PBS. Detection antibody: 87316-1-PBS. Standard: Eg4503. Range: 0.625-80 ng/mL.