

For Research Use Only

SPC25 Recombinant monoclonal antibody, PBS Only

Catalog Number: 87323-1-PBS



Basic Information

Catalog Number:

87323-1-PBS

Size:

100ug, Concentration: 1 mg/ml by Nanodrop;

Source:

Rabbit

Isotype:

IgG

Immunogen Catalog Number:

AG23985

GenBank Accession Number:

BC022255

GeneID (NCBI):

57405

UNIPROT ID:

Q9HBM1

Full Name:

SPC25, NDC80 kinetochore complex component, homolog (S. cerevisiae)

Observed MW:

26 kDa

Purification Method:

Protein A purification

CloneNo.:

252476G7

Applications

Tested Applications:

WB, Indirect ELISA

Species Specificity:

human

Storage

Storage:

Store at -80°C.

Storage Buffer:

PBS only, pH7.3

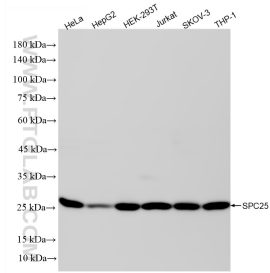
For technical support and original validation data for this product please contact:

T: 1 (888) 4PTGLAB (1-888-478-4522) (toll free in USA), or 1(312) 455-8498 (outside USA)

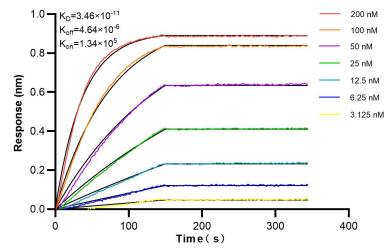
E: proteintech@ptglab.com
W: ptglab.com

This product is exclusively available under Proteintech Group brand and is not available to purchase from any other manufacturer.

Selected Validation Data



Various lysates were subjected to SDS PAGE followed by western blot with 87323-1-RR (SPC25 antibody) at dilution of 1:20000 incubated at room temperature for 1.5 hours. This data was developed using the same antibody clone with 87323-1-PBS in a different storage buffer formulation.



Biolayer interferometry (BLI) kinetic assays of 87323-1-RR against Human SPC25 were performed. The affinity constant is 34.6 pM.