

For Research Use Only

# Phospho-BCR (Tyr177) Recombinant monoclonal antibody, PBS Only

Catalog Number:87327-1-PBS



## Basic Information

Catalog Number:

87327-1-PBS

Size:

100ug , Concentration: 1 mg/ml by Nanodrop;

Source:

Rabbit

Isotype:

IgG

GenBank Accession Number:

NM\_004327

GeneID (NCBI):

613

UNIPROT ID:

P11274

Full Name:

breakpoint cluster region

Calculated MW:

143 kDa

Observed MW:

210 kDa

Purification Method:

Protein A purification

CloneNo.:

252641D5

## Applications

Tested Applications:

WB, Indirect ELISA

Species Specificity:

human

## Background Information

The Bcr gene, mapping on chromosome22, was originally identified by its presence in the chimeric Bcr-Abl oncogene. The aminoterminal BCR-encoded sequences of BCR-ABL contain a tyrosine-phosphorylated site that binds the SH2 domain of the adaptor protein GRB2. It is now evident that the phosphorylation of BCR Tyr177 is essential for BCR-ABL-mediated leukemogenesis, and its mutation largely abolishes GRB2 binding and diminishes BCR-ABL-induced Ras activation. (PMID: 22156549)

## Storage

Storage:

Store at -80°C.

Storage Buffer:

PBS only, pH7.3

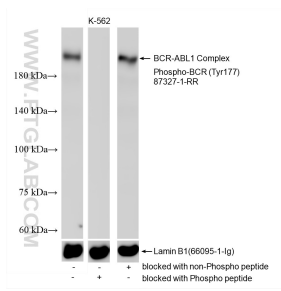
For technical support and original validation data for this product please contact:

T: 1 (888) 4PTGLAB (1-888-478-4522) (toll free in USA), or 1(312) 455-8498 (outside USA)

E: [proteintech@ptglab.com](mailto:proteintech@ptglab.com)  
W: [ptglab.com](http://ptglab.com)

**This product is exclusively available under Proteintech Group brand and is not available to purchase from any other manufacturer.**

## Selected Validation Data



K-562 cell lysates were subjected to SDS PAGE followed by western blot with 87327-1-RR (Phospho-BCR (Tyr177) antibody) blocked with BSA only, Phospho-BCR (Tyr177) peptide or non-Phospho peptide at dilution of 1:5000 incubated at room temperature for 1.5 hours. The membrane was stripped and re-blotted with Lamin B1 (66095-1-Ig) antibody as a loading control. This data was developed using the same antibody clone with 87327-1-PBS in a

