

For Research Use Only

Phospho-BCR (Tyr177) Recombinant monoclonal antibody

Catalog Number: 87327-1-RR



Basic Information

Catalog Number: 87327-1-RR	GenBank Accession Number: NM_004327	Purification Method: Protein A purification
Size: 100ul , Concentration: 1000 µg/ml by Nanodrop;	GeneID (NCBI): 613	CloneNo.: 252641D5
Source: Rabbit	UNIPROT ID: P11274	Recommended Dilutions: WB: 1:2000-1:10000
Isotype: IgG	Full Name: breakpoint cluster region	
	Calculated MW: 143 kDa	
	Observed MW: 210 kDa	

Applications

Tested Applications: WB, ELISA	Positive Controls: WB : K-562 cells,
Species Specificity: human	

Background Information

The Bcr gene, mapping on chromosome22, was originally identified by its presence in the chimeric Bcr-Abl oncogene. The aminoterminal BCR-encoded sequences of BCR-ABL contain a tyrosine-phosphorylated site that binds the SH2 domain of the adaptor protein GRB2. It is now evident that the phosphorylation of BCR Tyr177 is essential for BCR-ABL-mediated leukemogenesis, and its mutation largely abolishes GRB2 binding and diminishes BCR-ABL-induced Ras activation. (PMID: 22156549)

Storage

Storage:
Store at -20°C. Stable for one year after shipment.
Storage Buffer:
PBS with 0.02% sodium azide and 50% glycerol, pH7.3
Aliquoting is unnecessary for -20°C storage

*** 20ul sizes contain 0.1% BSA

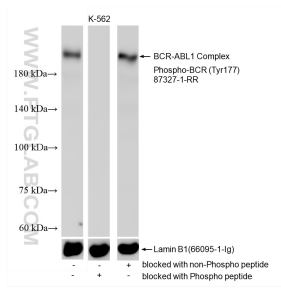
For technical support and original validation data for this product please contact:

T: 1 (888) 4PTGLAB (1-888-478-4522) (toll free in USA), or 1(312) 455-8498 (outside USA)

E: proteintech@ptglab.com
W: ptglab.com

This product is exclusively available under Proteintech Group brand and is not available to purchase from any other manufacturer.

Selected Validation Data



K-562 cell lysates were subjected to SDS PAGE followed by western blot with 87327-1-RR (Phospho-BCR (Tyr177) antibody) blocked with BSA only, Phospho-BCR (Tyr177) peptide or non-Phospho peptide at dilution of 1:5000 incubated at room temperature for 1.5 hours. The membrane was stripped and re-blotted with Lamin B1 (66095-1-Ig) antibody as a loading control.