

For Research Use Only

# TLE1 Recombinant monoclonal antibody, PBS Only

Catalog Number: 87332-1-PBS



## Basic Information

<b>Catalog Number:</b> 87332-1-PBS	<b>GenBank Accession Number:</b> BC010100	<b>Purification Method:</b> Protein A purification
<b>Size:</b> 100ug , Concentration: 1 mg/ml by Nanodrop;	<b>GeneID (NCBI):</b> 7088	<b>CloneNo.:</b> 252574H3
<b>Source:</b> Rabbit	<b>UNIPROT ID:</b> Q04724	
<b>Isotype:</b> IgG	<b>Full Name:</b> transducin-like enhancer of split 1 (E(sp1) homolog, Drosophila)	
<b>Immunogen Catalog Number:</b> AG17299	<b>Calculated MW:</b> 770 aa, 83 kDa	
	<b>Observed MW:</b> 80-95 kDa	

## Applications

**Tested Applications:**  
WB, Indirect ELISA

**Species Specificity:**  
human, mouse

## Background Information

TLE1 (Transducin-like enhancer protein 1) is a transcriptional corepressor and binds to a number of transcription factors. It can inhibit NF-kappa-B-regulated gene expression and the transcriptional activation mediated by FOXA2, and by CTNNB1 and TCF family members in Wnt signaling. The effects of full-length TLE family members may be modulated by association with dominant-negative AES (PMID: 10660609). TLE1 is highly expressed in postnatal brain (PMID: 29758293; 27852056).

## Storage

**Storage:**  
Store at -80°C.

**Storage Buffer:**  
PBS only, pH7.3

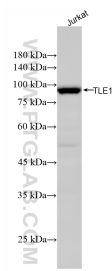
For technical support and original validation data for this product please contact:

T: 1 (888) 4PTGLAB (1-888-478-4522) (toll free in USA), or 1(312) 455-8498 (outside USA)

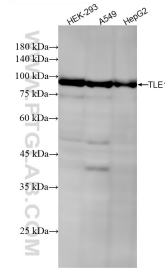
E: [proteintech@ptglab.com](mailto:proteintech@ptglab.com)  
W: [ptglab.com](http://ptglab.com)

**This product is exclusively available under Proteintech Group brand and is not available to purchase from any other manufacturer.**

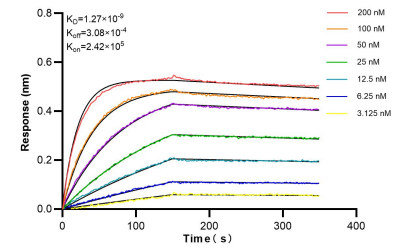
## Selected Validation Data



Jurkat cells were subjected to SDS PAGE followed by western blot with 87332-1-RR (TLE1 antibody) at dilution of 1:3000 incubated at room temperature for 1.5 hours. This data was developed using the same antibody clone with 87332-1-PBS in a different storage buffer formulation.



Various lysates were subjected to SDS PAGE followed by western blot with 87332-1-RR (TLE1 antibody) at dilution of 1:3000 incubated at room temperature for 1.5 hours. This data was developed using the same antibody clone with 87332-1-PBS in a different storage buffer formulation.



Biolayer interferometry (BLI) kinetic assays of 87332-1-RR against Human TLE1 were performed. The affinity constant is 1.29 nM.