

For Research Use Only

TLE1 Recombinant monoclonal antibody

Catalog Number: 87332-1-RR



Basic Information

Catalog Number: 87332-1-RR	GenBank Accession Number: BC010100	Purification Method: Protein A purification
Size: 100ul , Concentration: 1000 µg/ml by Nanodrop;	GeneID (NCBI): 7088	CloneNo.: 252574H3
Source: Rabbit	UNIPROT ID: Q04724	Recommended Dilutions: WB: 1:1000-1:6000
Isotype: IgG	Full Name: transducin-like enhancer of split 1 (E(sp1) homolog, Drosophila)	
Immunogen Catalog Number: AG17299	Calculated MW: 770 aa, 83 kDa	
	Observed MW: 80-95 kDa	

Applications

Tested Applications: WB, ELISA	Positive Controls: WB : HEK-293 cells, Jurkat cells, mouse lung tissue, A549 cells, HepG2 cells
Species Specificity: human, mouse	

Background Information

TLE1 (Transducin-like enhancer protein 1) is a transcriptional corepressor and binds to a number of transcription factors. It can inhibit NF-kappa-B-regulated gene expression and the transcriptional activation mediated by FOXA2, and by CTNNB1 and TCF family members in Wnt signaling. The effects of full-length TLE family members may be modulated by association with dominant-negative AES (PMID: 10660609). TLE1 is highly expressed in postnatal brain (PMID: 29758293; 27852056).

Storage

Storage:
Store at -20°C. Stable for one year after shipment.
Storage Buffer:
PBS with 0.02% sodium azide and 50% glycerol, pH7.3
Aliquoting is unnecessary for -20°C storage

*** 20ul sizes contain 0.1% BSA

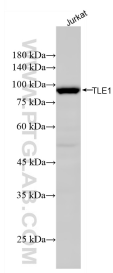
For technical support and original validation data for this product please contact:

T: 1 (888) 4PTGLAB (1-888-478-4522) (toll free in USA), or 1(312) 455-8498 (outside USA)

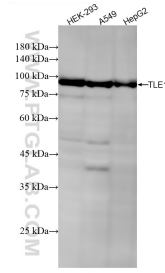
E: proteintech@ptglab.com
W: ptglab.com

This product is exclusively available under Proteintech Group brand and is not available to purchase from any other manufacturer.

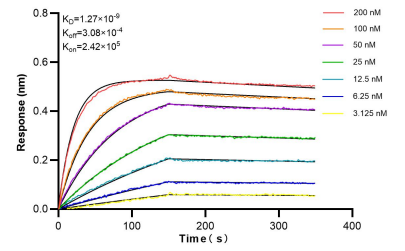
Selected Validation Data



Jurkat cells were subjected to SDS PAGE followed by western blot with 87332-1-RR (TLE1 antibody) at dilution of 1:3000 incubated at room temperature for 1.5 hours.



Various lysates were subjected to SDS PAGE followed by western blot with 87332-1-RR (TLE1 antibody) at dilution of 1:3000 incubated at room temperature for 1.5 hours.



Biolayer interferometry (BLI) kinetic assays of 87332-1-RR against Human TLE1 were performed. The affinity constant is 1.29 nM.