

For Research Use Only

TMEM201 Recombinant monoclonal antibody, PBS Only

Catalog Number: 87333-1-PBS



Basic Information

Catalog Number: 87333-1-PBS	GenBank Accession Number: BC137291	Purification Method: Protein A purification
Size: 100ug, Concentration: 1 mg/ml by Nanodrop;	GeneID (NCBI): 199953	CloneNo.: 252547D10
Source: Rabbit	UNIPROT ID: Q55NT2	
Isotype: IgG	Full Name: transmembrane protein 201	
Immunogen Catalog Number: AG21360	Calculated MW: 666 aa, 72 kDa	
	Observed MW: 43 kDa and 72 kDa	

Applications

Tested Applications:
WB, IF/ICC, Indirect ELISA

Species Specificity:
human, mouse

Background Information

TMEM201, also known as SAMP1 and NET5, is a member of the TMEM201 family. TMEM201 is a nuclear envelope transmembrane protein primarily localized to the inner nuclear membrane. It plays a crucial role in nuclear envelope architecture and is a component of the linker of nucleoskeleton and cytoskeleton (LINC) complex. TMEM201 is essential for proper nuclear division and nuclear membrane reorganization during mitosis (PMID: 35311970, PMID: 35311970). TMEM201 has two isoforms with the molecular weights of 43 kDa and 72 kDa, respectively.

Storage

Storage:
Store at -80°C.

Storage Buffer:
PBS only, pH7.3

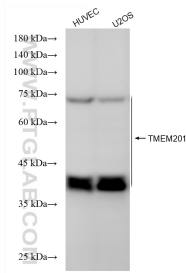
For technical support and original validation data for this product please contact:

T: 1 (888) 4PTGLAB (1-888-478-4522) (toll free in USA), or 1(312) 455-8498 (outside USA)

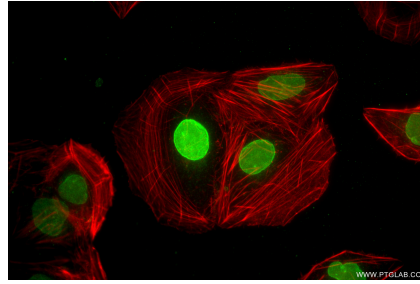
E: proteintech@ptglab.com
W: ptglab.com

This product is exclusively available under Proteintech Group brand and is not available to purchase from any other manufacturer.

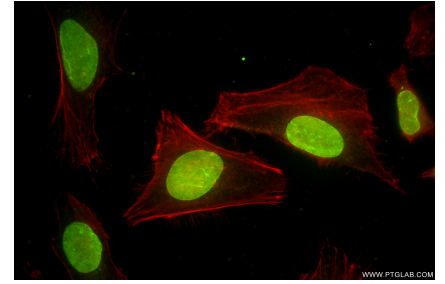
Selected Validation Data



Various lysates were subjected to SDS PAGE followed by western blot with 87333-1-RR (TMEM201 antibody) at dilution of 1:10000 incubated at room temperature for 1.5 hours. This data was developed using the same antibody clone with 87333-1-PBS in a different storage buffer formulation.



Immunofluorescent analysis of (4% PFA) fixed U2OS cells using TMEM201 antibody (87333-1-RR, Clone: 252547D10) at dilution of 1:500 and CoraLite@488-Conjugated Goat Anti-Rabbit IgG(H+L) (SA00013-2), CL594-Phalloidin (red). This data was developed using the same antibody clone with 87333-1-PBS in a different storage buffer formulation.



Immunofluorescent analysis of (4% PFA) fixed HeLa cells using TMEM201 antibody (87333-1-RR, Clone: 252547D10) at dilution of 1:500 and CoraLite@488-Conjugated Goat Anti-Rabbit IgG(H+L) (SA00013-2), CL594-Phalloidin (red). This data was developed using the same antibody clone with 87333-1-PBS in a different storage buffer formulation.