

For Research Use Only

# TMEM201 Recombinant monoclonal antibody

Catalog Number: 87333-1-RR



## Basic Information

<b>Catalog Number:</b> 87333-1-RR	<b>GenBank Accession Number:</b> BC137291	<b>Purification Method:</b> Protein A purification
<b>Size:</b> 100ul , Concentration: 1000 µg/ml by Nanodrop;	<b>GeneID (NCBI):</b> 199953	<b>CloneNo.:</b> 252547D10
<b>Source:</b> Rabbit	<b>UNIPROT ID:</b> Q55NT2	<b>Recommended Dilutions:</b> WB: 1:5000-1:50000 IF/ICC: 1:250-1:1000
<b>Isotype:</b> IgG	<b>Full Name:</b> transmembrane protein 201	
<b>Immunogen Catalog Number:</b> AG21360	<b>Calculated MW:</b> 666 aa, 72 kDa	
	<b>Observed MW:</b> 43 kDa and 72 kDa	

## Applications

<b>Tested Applications:</b> WB, IF/ICC, ELISA	<b>Positive Controls:</b> WB : HUVEC cells, mouse brain tissue, U2OS cells, mouse heart tissue
<b>Species Specificity:</b> human, mouse	<b>IF/ICC :</b> U2OS cells, HeLa cells

## Background Information

TMEM201, also known as SAMP1 and NET5, is a member of the TMEM201 family. TMEM201 is a nuclear envelope transmembrane protein primarily localized to the inner nuclear membrane. It plays a crucial role in nuclear envelope architecture and is a component of the linker of nucleoskeleton and cytoskeleton (LINC) complex. TMEM201 is essential for proper nuclear division and nuclear membrane reorganization during mitosis (PMID: 35311970, PMID: 35311970). TMEM201 has two isoforms with the molecular weights of 43 kDa and 72 kDa, respectively.

## Storage

**Storage:**  
Store at -20°C. Stable for one year after shipment.  
**Storage Buffer:**  
PBS with 0.02% sodium azide and 50% glycerol, pH7.3  
Aliquoting is unnecessary for -20°C storage

\*\*\* 20ul sizes contain 0.1% BSA

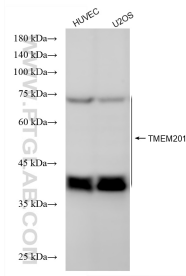
For technical support and original validation data for this product please contact:

T: 1 (888) 4PTGLAB (1-888-478-4522) (toll free in USA), or 1(312) 455-8498 (outside USA)

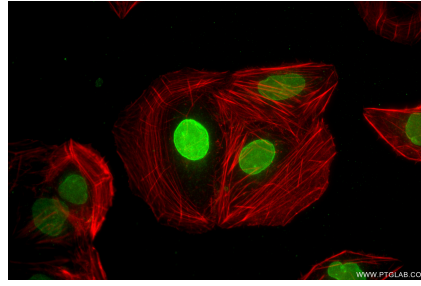
E: [proteintech@ptglab.com](mailto:proteintech@ptglab.com)  
W: [ptglab.com](http://ptglab.com)

This product is exclusively available under Proteintech Group brand and is not available to purchase from any other manufacturer.

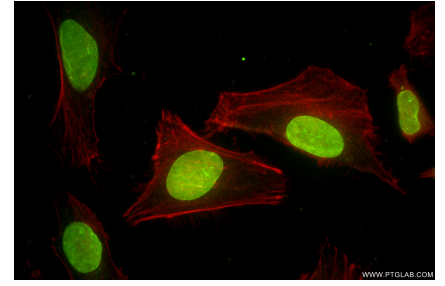
## Selected Validation Data



Various lysates were subjected to SDS PAGE followed by western blot with 87333-1-RR (TMEM201 antibody) at dilution of 1:10000 incubated at room temperature for 1.5 hours.



Immunofluorescent analysis of (4% PFA) fixed U2OS cells using TMEM201 antibody (87333-1-RR, Clone: 252547D10) at dilution of 1:500 and CoraLite® 488-Conjugated Goat Anti-Rabbit IgG(H+L) (SA00013-2), CL594-Phalloidin (red).



Immunofluorescent analysis of (4% PFA) fixed HeLa cells using TMEM201 antibody (87333-1-RR, Clone: 252547D10) at dilution of 1:500 and CoraLite® 488-Conjugated Goat Anti-Rabbit IgG(H+L) (SA00013-2), CL594-Phalloidin (red).