

For Research Use Only

SLC39A6/ZIP6 Recombinant monoclonal antibody

Catalog Number: 87340-1-RR



Basic Information

Catalog Number:

87340-1-RR

Size:

100ul, Concentration: 1000 µg/ml by Nanodrop;

Source:

Rabbit

Isotype:

IgG

GenBank Accession Number:

BC039498

GeneID (NCBI):

25800

UNIPROT ID:

Q13433

Full Name:

solute carrier family 39 (zinc transporter), member 6

Calculated MW:

85 kDa

Observed MW:

86-100 kDa

Purification Method:

Protein A purification

CloneNo.:

252505E9

Recommended Dilutions:

WB: 1:1000-1:8000

Applications

Tested Applications:

WB, ELISA

Species Specificity:

human, mouse

Positive Controls:

WB: HepG2 cells, HeLa cells, HEK-293T cells, Jurkat cells, HuH-7 cells, 4T1 cells

Background Information

The zinc transporter LIV-1 (also known as SLC39A6 or ZIP6) was originally identified as an estrogen-induced gene in breast cancer cells. Elevated LIV-1 expression is reportedly related to cancer progression in various types of cancer, including breast, prostate, pancreatic, cervical and liver cancers. While correlation of LIV-1 and prognosis may vary. LIV 1 has 3 isoforms with MW of 85-100 (glycosylation and phosphorylation), 48 and 32 kDa while migrates as different bands in different lysates in SDS-PAGE. Furthermore, it has been reported in the papers that full-length SLC39A6/ZIP6, as the pro-protein, is predicted to be 85 kDa and produces a 103 kDa band, the N-terminal fragment after cleavage is 35 kDa, and the cleaved ZIP6 is 68 kDa (PMID: 23919497, PMID: 26444413).

Storage

Storage:

Store at -20°C. Stable for one year after shipment.

Storage Buffer:

PBS with 0.02% sodium azide and 50% glycerol, pH7.3

Aliquoting is unnecessary for -20°C storage

*** 20ul sizes contain 0.1% BSA

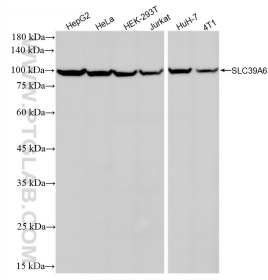
For technical support and original validation data for this product please contact:

T: 1 (888) 4PTGLAB (1-888-478-4522) (toll free in USA), or 1(312) 455-8498 (outside USA)

E: proteintech@ptglab.com
W: ptglab.com

This product is exclusively available under Proteintech Group brand and is not available to purchase from any other manufacturer.

Selected Validation Data



Various lysates were subjected to SDS PAGE followed by western blot with 87340-1-RR (SLC39A6/ZIP6 antibody) at dilution of 1:4000 incubated at room temperature for 1.5 hours.