

For Research Use Only

SPATA6 Recombinant monoclonal antibody, PBS Only

Catalog Number: 87341-1-PBS



Basic Information

Catalog Number: 87341-1-PBS	GenBank Accession Number: BC020660	Purification Method: Protein A purification
Size: 100ug , Concentration: 1 mg/ml by Nanodrop;	GeneID (NCBI): 54558	CloneNo.: 252546E7
Source: Rabbit	UNIPROT ID: Q9NWH7	
Isotype: IgG	Full Name: spermatogenesis associated 6	
Immunogen Catalog Number: AG41247	Calculated MW: 472 aa, 54 kDa	
	Observed MW: 54-60 kDa	

Applications

Tested Applications:
WB, Indirect ELISA

Species Specificity:
human, mouse

Background Information

Spermatogenesis-associated protein 6 (SPATA6) is a testis-enriched protein crucial for spermatogenesis and male fertility. It localizes to the sperm head-tail coupling apparatus (HTCA) and is crucial for the proper assembly of the sperm connecting piece and tight head-tail conjunction. SPATA6 is a core structural component of the sperm fibrous sheath (FS), a cytoskeletal structure in the principal piece of the sperm flagellum essential for normal sperm motility. Mutations in SPATA6 can lead to acephalic spermatozoa and male infertility (PMID: 38454159, PMID: 41058548).

Storage

Storage:
Store at -80°C.

Storage Buffer:
PBS only, pH7.3

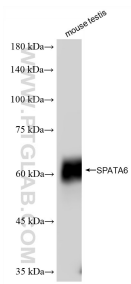
For technical support and original validation data for this product please contact:

T: 1 (888) 4PTGLAB (1-888-478-4522) (toll free in USA), or 1(312) 455-8498 (outside USA)

E: proteintech@ptglab.com
W: ptglab.com

This product is exclusively available under Proteintech Group brand and is not available to purchase from any other manufacturer.

Selected Validation Data



Mouse testis tissue were subjected to SDS PAGE followed by western blot with 87341-1-RR (SPATA6 antibody) at dilution of 1:10000 incubated at room temperature for 1.5 hours. This data was developed using the same antibody clone with 87341-1-PBS in a different storage buffer formulation.