

For Research Use Only

SPATA6 Recombinant monoclonal antibody

Catalog Number: 87341-1-RR



Basic Information

| | | |
|--|---|---|
| Catalog Number: 87341-1-RR | GenBank Accession Number: BC020660 | Purification Method: Protein A purification |
| Size: 100ul , Concentration: 1000 µg/ml by Nanodrop; | GeneID (NCBI): 54558 | CloneNo.: 252546E7 |
| Source: Rabbit | UNIPROT ID: Q9NWH7 | Recommended Dilutions: WB: 1:5000-1:50000 |
| Isotype: IgG | Full Name: spermatogenesis associated 6 | |
| Immunogen Catalog Number: AG41247 | Calculated MW: 472 aa, 54 kDa | |
| | Observed MW: 54-60 kDa | |

Applications

| | |
|---|---|
| Tested Applications: WB, ELISA | Positive Controls: WB : mouse testis tissue, mouse ovary tissue |
| Species Specificity: human, mouse | |

Background Information

Spermatogenesis-associated protein 6 (SPATA6) is a testis-enriched protein crucial for spermatogenesis and male fertility. It localizes to the sperm head-tail coupling apparatus (HTCA) and is crucial for the proper assembly of the sperm connecting piece and tight head-tail conjunction. SPATA6 is a core structural component of the sperm fibrous sheath (FS), a cytoskeletal structure in the principal piece of the sperm flagellum essential for normal sperm motility. Mutations in SPATA6 can lead to acephalic spermatozoa and male infertility (PMID: 38454159, PMID: 41058548).

Storage

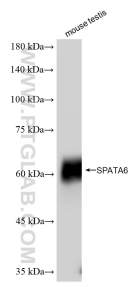
Storage:
Store at -20°C. Stable for one year after shipment.
Storage Buffer:
PBS with 0.02% sodium azide and 50% glycerol, pH7.3
Aliquoting is unnecessary for -20°C storage

*** 20ul sizes contain 0.1% BSA

For technical support and original validation data for this product please contact:
T: 1 (888) 4PTGLAB (1-888-478-4522) (toll free in USA), or 1(312) 455-8498 (outside USA)
E: proteintech@ptglab.com
W: ptglab.com

This product is exclusively available under Proteintech Group brand and is not available to purchase from any other manufacturer.

Selected Validation Data



Mouse testis tissue were subjected to SDS PAGE followed by western blot with 87341-1-RR (SPATA6 antibody) at dilution of 1:10000 incubated at room temperature for 1.5 hours.