

For Research Use Only

# Phospho-Lamin A/C (Ser22) Recombinant monoclonal antibody

Catalog Number: 87346-1-RR



## Basic Information

<b>Catalog Number:</b> 87346-1-RR	<b>GenBank Accession Number:</b> NM_170707	<b>Purification Method:</b> Protein A purification
<b>Size:</b> 100ul , Concentration: 1000 µg/ml by Nanodrop;	<b>GeneID (NCBI):</b> 4000	<b>CloneNo.:</b> 252663H8
<b>Source:</b> Rabbit	<b>ENSEMBL Gene ID:</b> ENSG00000160789	<b>Recommended Dilutions:</b> WB: 1:5000-1:50000 IHC: 1:500-1:2000
<b>Isotype:</b> IgG	<b>UNIPROT ID:</b> P02545	
	<b>Full Name:</b> lamin A/C	
	<b>Calculated MW:</b> 65 kDa	
	<b>Observed MW:</b> 65 kDa, 70 kDa	

## Applications

<b>Tested Applications:</b> WB, IHC, ELISA	<b>Positive Controls:</b>
<b>Species Specificity:</b> human	<b>WB :</b> paclitaxel treated HeLa cells, <b>IHC :</b> mouse colon tissue,

**Note-IHC: suggested antigen retrieval with TE buffer pH 9.0; (\*) Alternatively, antigen retrieval may be performed with citrate buffer pH 6.0**

## Background Information

Lamin A/C is also named as LMNA or LMN1. The lamin family of proteins make up the matrix and are highly conserved in evolution. Phospho-Lamin A/C (Ser22) is a phosphorylated form of Lamin A/C, which is a protein that plays a crucial role in the structure and function of the nuclear lamina. Lamin A/C phosphorylation is predicted to have regulatory consequences.

## Storage

**Storage:**  
Store at -20°C. Stable for one year after shipment.  
**Storage Buffer:**  
PBS with 0.02% sodium azide and 50% glycerol, pH7.3  
Aliquoting is unnecessary for -20°C storage

**\*\*\* 20ul sizes contain 0.1%BSA**

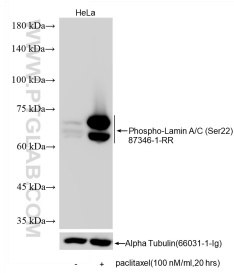
For technical support and original validation data for this product please contact:

T: 1 (888) 4PTGLAB (1-888-478-4522) (toll free  
in USA), or 1(312) 455-8498 (outside USA)

E: [proteintech@ptglab.com](mailto:proteintech@ptglab.com)  
W: [ptglab.com](http://ptglab.com)

**This product is exclusively available under Proteintech Group brand and is not available to purchase from any other manufacturer.**

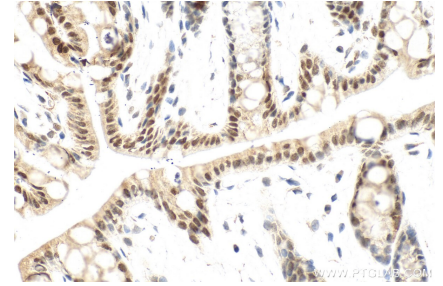
## Selected Validation Data



Non-treated HeLa cells and paclitaxel treated HeLa cells were subjected to SDS PAGE followed by western blot with 87346-1-RR (Phospho-Lamin A/C (Ser22) antibody) at dilution of 1:10000 incubated at room temperature for 1.5 hours. The membrane was stripped and re-blotted with Alpha Tubulin (66031-1-Ig) antibody as a loading control.



Immunohistochemical analysis of paraffin-embedded mouse colon tissue slide using 87346-1-RR (Phospho-Lamin A/C (Ser22) antibody) at dilution of 1:1000 (under 10x lens). Heat mediated antigen retrieval with Tris-EDTA buffer (pH 9.0).



Immunohistochemical analysis of paraffin-embedded mouse colon tissue slide using 87346-1-RR (Phospho-Lamin A/C (Ser22) antibody) at dilution of 1:1000 (under 40x lens). Heat mediated antigen retrieval with Tris-EDTA buffer (pH 9.0).