

For Research Use Only

Mouse HGFR/c-Met Recombinant monoclonal antibody, PBS Only (Detector)

Catalog Number: 87352-1-PBS



Basic Information

Catalog Number: 87352-1-PBS	GenBank Accession Number: /	Purification Method: Protein A purification
Size: 100ug , Concentration: 1 mg/ml by Nanodrop;	GeneID (NCBI): 17295	CloneNo.: 252395C10
Source: Rabbit	UNIPROT ID: P16056	
Isotype: IgG	Full Name: met proto-oncogene	
Immunogen Catalog Number: EG6351	Calculated MW: 154 kDa	

Applications

Tested Applications:
Cytometric bead array, Indirect ELISA

Species Specificity:
mouse

Product Information

87352-1-PBS targets HGFR/c-Met as part of a matched antibody pair:

MP02974-1: 87352-2-PBS capture and 87352-1-PBS detection (validated in Cytometric bead array)

Unconjugated rabbit recombinant monoclonal antibody in PBS only (BSA and azide free) storage buffer at a concentration of 1 mg/mL, ready for conjugation. Created using Proteintech's proprietary in-house recombinant technology. Recombinant production enables unrivalled batch-to-batch consistency, easy scale-up, and future security of supply.

This conjugation ready format makes antibodies ideal for use in many applications including: ELISAs, multiplex assays requiring matched pairs, mass cytometry, and multiplex imaging applications. Antibody use should be optimized by the end user for each application and assay.

Storage

Storage:
Store at -80°C.

Storage Buffer:
PBS only, pH7.3

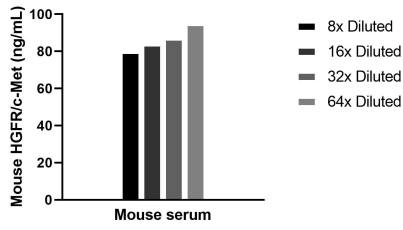
For technical support and original validation data for this product please contact:

T: 1 (888) 4PTGLAB (1-888-478-4522) (toll free in USA), or 1(312) 455-8498 (outside USA)

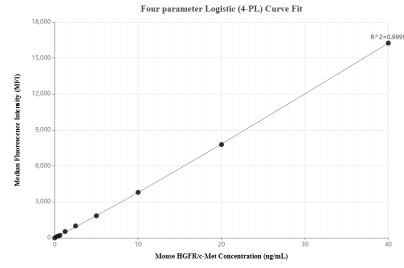
E: proteintech@ptglab.com
W: ptglab.com

This product is exclusively available under Proteintech Group brand and is not available to purchase from any other manufacturer.

Selected Validation Data



The mean HGFR/c-Met concentration was determined to be 86.1 ng/mL in Mouse serum.



Cytometric bead array standard curve of MP02974-1, MOUSE HGFR/c-Met Recombinant Matched Antibody Pair, PBS Only. Capture antibody: 87352-2-PBS. Detection antibody: 87352-1-PBS. Standard: Eg6351. Range: 0.312-40 ng/mL.