

For Research Use Only

Mouse Gpr15 Recombinant monoclonal antibody, PBS Only (Capture)

Catalog Number: 87359-3-PBS



Basic Information

Catalog Number: 87359-3-PBS	GenBank Accession Number: BC119518	Purification Method: Protein A purification
Size: 100ug , Concentration: 1 mg/ml by Nanodrop;	GeneID (NCBI): 71223	CloneNo.: 252257A6
Source: Rabbit	UNIPROT ID: Q0VDU3	
Isotype: IgG	Full Name: G protein-coupled receptor 15	

Applications

Tested Applications:
Cytometric bead array, Indirect ELISA

Species Specificity:
mouse

Product Information

87359-3-PBS targets Gpr15 as part of a matched antibody pair:

MP02986-1: 87359-3-PBS capture and 87359-2-PBS detection (validated in Cytometric bead array)

Unconjugated rabbit recombinant monoclonal antibody in PBS only (BSA and azide free) storage buffer at a concentration of 1 mg/mL, ready for conjugation. Created using Proteintech's proprietary in-house recombinant technology. Recombinant production enables unrivalled batch-to-batch consistency, easy scale-up, and future security of supply.

This conjugation ready format makes antibodies ideal for use in many applications including: ELISAs, multiplex assays requiring matched pairs, mass cytometry, and multiplex imaging applications. Antibody use should be optimized by the end user for each application and assay.

Storage

Storage:
Store at -80°C.
Storage Buffer:
PBS only, pH7.3

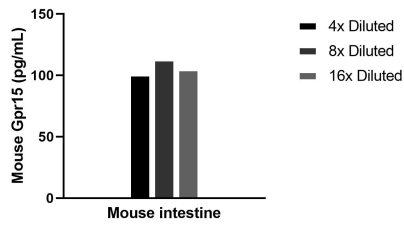
For technical support and original validation data for this product please contact:

T: 1 (888) 4PTGLAB (1-888-478-4522) (toll free in USA), or 1(312) 455-8498 (outside USA)

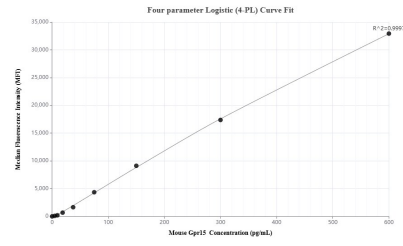
E: proteintech@ptglab.com
W: ptglab.com

This product is exclusively available under Proteintech Group brand and is not available to purchase from any other manufacturer.

Selected Validation Data



The mean Gpr15 concentration was determined to be 106.1 pg/mL in Mouse intestine tissue extract based on a 4.9 mg/mL extract load.



Cytometric bead array standard curve of MP02986-1, MOUSE Gpr15 Recombinant Matched Antibody Pair, PBS Only. Capture antibody: 87359-3-PBS. Detection antibody: 87359-2-PBS. Standard: SY02745. Range: 4.69-600 pg/mL.