

For Research Use Only

# EPHA1 Recombinant monoclonal antibody, PBS Only

Catalog Number: 87362-1-PBS



## Basic Information

<b>Catalog Number:</b> 87362-1-PBS	<b>GenBank Accession Number:</b> NM_005232.4	<b>Purification Method:</b> Protein A purification
<b>Size:</b> 100ug, Concentration: 1 mg/ml by Nanodrop;	<b>GeneID (NCBI):</b> 2041	<b>CloneNo.:</b> 252393D10
<b>Source:</b> Rabbit	<b>UNIPROT ID:</b> P21709-1	
<b>Isotype:</b> IgG	<b>Full Name:</b> EPH receptor A1	
<b>Immunogen Catalog Number:</b> EG5474	<b>Calculated MW:</b> 108 kDa	
	<b>Observed MW:</b> 120-125 kDa	

## Applications

**Tested Applications:**  
WB, Indirect ELISA

**Species Specificity:**  
human

## Background Information

EPHA1, also named as EPH, EPHT and EPHT1, belongs to ephrin receptor subfamily of the protein-tyrosine kinase family. EPH and EPH-related receptors have been implicated in mediating developmental events, particularly in the nervous system. Receptors in the EPH subfamily typically have a single kinase domain and an extracellular region containing a Cys-rich domain and 2 fibronectin type III repeats. Ligands in the ephrin-A subclass, including the prototype family member ephrin-A1 (B61), are membrane associated through glycosylphosphatidyl-inositol linkages, whereas ephrin-B subclass consists of ligands with transmembrane domains. The general role of the Eph family is in mediating repulsive cell-cell interaction.

## Storage

**Storage:**  
Store at -80°C.

**Storage Buffer:**  
PBS only, pH7.3

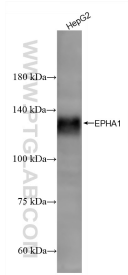
For technical support and original validation data for this product please contact:

T: 1 (888) 4PTGLAB (1-888-478-4522) (toll free in USA), or 1(312) 455-8498 (outside USA)

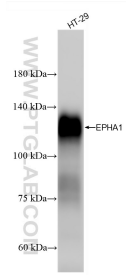
E: [proteintech@ptglab.com](mailto:proteintech@ptglab.com)  
W: [ptglab.com](http://ptglab.com)

**This product is exclusively available under Proteintech Group brand and is not available to purchase from any other manufacturer.**

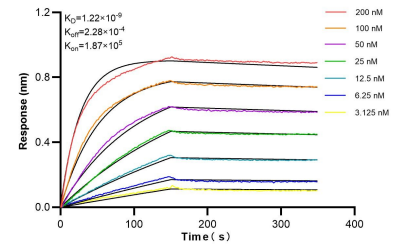
## Selected Validation Data



HepG2 cells were subjected to SDS PAGE followed by western blot with 87362-1-RR (EPHA1 antibody) at dilution of 1:5000 incubated at room temperature for 1.5 hours. This data was developed using the same antibody clone with 87362-1-PBS in a different storage buffer formulation.



HT-29 cells were subjected to SDS PAGE followed by western blot with 87362-1-RR (EPHA1 antibody) at dilution of 1:5000 incubated at room temperature for 1.5 hours. This data was developed using the same antibody clone with 87362-1-PBS in a different storage buffer formulation.



Biolayer interferometry (BLI) kinetic assays of 87362-1-RR against Human EPHA1 were performed. The affinity constant is 1.22 nM.