

For Research Use Only

EPHA1 Recombinant monoclonal antibody

Catalog Number: 87362-1-RR



Basic Information

| | | |
|--|---|---|
| Catalog Number: 87362-1-RR | GenBank Accession Number: NM_005232.4 | Purification Method: Protein A purification |
| Size: 100ul , Concentration: 1000 µg/ml by Nanodrop; | GeneID (NCBI): 2041 | CloneNo.: 252393D10 |
| Source: Rabbit | UNIPROT ID: P21709-1 | Recommended Dilutions: WB: 1:2000-1:10000 |
| Isotype: IgG | Full Name: EPH receptor A1 | |
| Immunogen Catalog Number: EG5474 | Calculated MW: 108 kDa | |
| | Observed MW: 120-125 kDa | |

Applications

| | |
|--|--|
| Tested Applications: WB, ELISA | Positive Controls: WB : HepG2 cells, HT-29 cells |
| Species Specificity: human | |

Background Information

EPHA1, also named as EPH, EPHT and EPHT1, belongs to ephrin receptor subfamily of the protein-tyrosine kinase family. EPH and EPH-related receptors have been implicated in mediating developmental events, particularly in the nervous system. Receptors in the EPH subfamily typically have a single kinase domain and an extracellular region containing a Cys-rich domain and 2 fibronectin type III repeats. Ligands in the ephrin-A subclass, including the prototype family member ephrin-A1 (B61), are membrane associated through glycosylphosphatidyl-inositol linkages, whereas ephrin-B subclass consists of ligands with transmembrane domains. The general role of the Eph family is in mediating repulsive cell-cell interaction.

Storage

Storage:
Store at -20°C. Stable for one year after shipment.
Storage Buffer:
PBS with 0.02% sodium azide and 50% glycerol, pH7.3
Aliquoting is unnecessary for -20°C storage

*** 20ul sizes contain 0.1% BSA

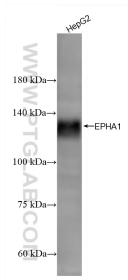
For technical support and original validation data for this product please contact:

T: 1 (888) 4PTGLAB (1-888-478-4522) (toll free in USA), or 1(312) 455-8498 (outside USA)

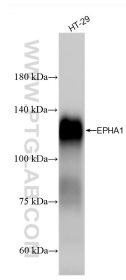
E: proteintech@ptglab.com
W: ptglab.com

This product is exclusively available under Proteintech Group brand and is not available to purchase from any other manufacturer.

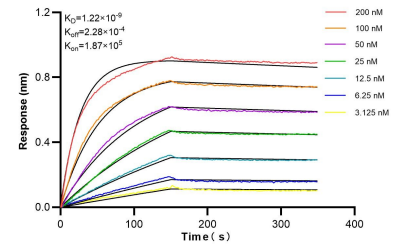
Selected Validation Data



HepG2 cells were subjected to SDS PAGE followed by western blot with 87362-1-RR (EPHA1 antibody) at dilution of 1:5000 incubated at room temperature for 1.5 hours.



HT-29 cells were subjected to SDS PAGE followed by western blot with 87362-1-RR (EPHA1 antibody) at dilution of 1:5000 incubated at room temperature for 1.5 hours.



Biolayer interferometry (BLI) kinetic assays of 87362-1-RR against Human EPHA1 were performed. The affinity constant is 1.22 nM.