

For Research Use Only

Phospho-PKA C (Thr198) Recombinant monoclonal antibody, PBS Only

Catalog Number: 87365-3-PBS



Basic Information

Catalog Number: 87365-3-PBS	GenBank Accession Number: NM_002730	Purification Method: Protein A purification
Size: 100ug, Concentration: 1 mg/ml by Nanodrop;	GeneID (NCBI): 5566	CloneNo.: 252621G1
Source: Rabbit	UNIPROT ID: P17612	
Isotype: IgG	Full Name: protein kinase, cAMP-dependent, catalytic, alpha	
	Calculated MW: 41 kDa	
	Observed MW: 38-43 kDa	

Applications

Tested Applications:
WB, Indirect ELISA

Species Specificity:
human, mouse

Background Information

Protein kinase A (PKA) is a 3'-5'-cyclic adenosine monophosphate (cAMP)-dependent kinase that is at the center of diverse biological functions in numerous systems. Inactive PKA is composed of two catalytic (PKA-C) and two regulatory (PKA-R) subunits. The binding of cAMP to the PKA-R subunits activates the enzyme, causing the release of PKA-C. Humans have three genes encoding PKA-C: PRKACA, PRKACB, and PRKACG, and two types of PKA-R's: type PKA-RI (PKA-R α and PKA-R β) and type PKA-RII (PKA-RII α and PKA-RII β). (PMID: 36431013, PMID: 39592424) This antibody recognizes the phosphorylation at the Thr198 site of PKA-C (including PRKACA, PRKACB, and PRKACG). After removing methionine, the site is also called Thr197.

Storage

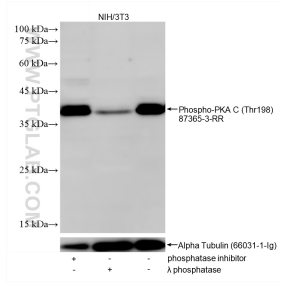
Storage:
Store at -80°C.

Storage Buffer:
PBS only, pH7.3

For technical support and original validation data for this product please contact:
T: 1 (888) 4PTGLAB (1-888-478-4522) (toll free in USA), or 1(312) 455-8498 (outside USA) E: proteintech@ptglab.com
W: ptglab.com

This product is exclusively available under Proteintech Group brand and is not available to purchase from any other manufacturer.

Selected Validation Data



Non-treated NIH/3T3 cells, phosphatase inhibitor treated NIH/3T3 cells and λ phosphatase treated NIH/3T3 cells were subjected to SDS PAGE followed by western blot with 87365-3-RR (Phospho-PKA C (Thr198) antibody) at dilution of 1:10000 incubated at room temperature for 1.5 hours. The membrane was stripped and re-blotted with Alpha Tubulin (66031-1-Ig) antibody as a loading control. This data was developed using the same antibody clone with 87365-3-

