

For Research Use Only

Mouse TL1A/TNFSF15 Recombinant monoclonal antibody, PBS Only (Capture)

Catalog Number: 87367-2-PBS



Basic Information

Catalog Number: 87367-2-PBS	GenBank Accession Number: /	Purification Method: Protein A purification
Size: 100ug , Concentration: 1 mg/ml by Nanodrop;	GeneID (NCBI): 326623	CloneNo.: 250983F7
Source: Rabbit	UNIPROT ID: Q5UBV8	
Isotype: IgG	Full Name: tumor necrosis factor (ligand) superfamily, member 15	
Immunogen Catalog Number: EG5273	Calculated MW: 28 kDa	

Applications

Tested Applications:
Sandwich ELISA, Indirect ELISA

Species Specificity:
mouse

Product Information

87367-2-PBS targets TL1A/TNFSF15 as part of a matched antibody pair:

MP02970-1: 87367-2-PBS capture and 87367-1-PBS detection (validated in Sandwich ELISA)

Unconjugated rabbit recombinant monoclonal antibody in PBS only (BSA and azide free) storage buffer at a concentration of 1 mg/mL, ready for conjugation. Created using Proteintech's proprietary in-house recombinant technology. Recombinant production enables unrivalled batch-to-batch consistency, easy scale-up, and future security of supply.

This conjugation ready format makes antibodies ideal for use in many applications including: ELISAs, multiplex assays requiring matched pairs, mass cytometry, and multiplex imaging applications. Antibody use should be optimized by the end user for each application and assay.

Storage

Storage:
Store at -80°C.

Storage Buffer:
PBS only, pH7.3

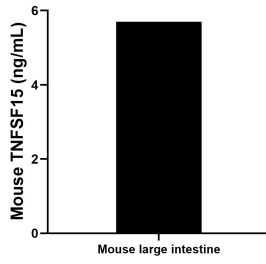
For technical support and original validation data for this product please contact:

T: 1 (888) 4PTGLAB (1-888-478-4522) (toll free in USA), or 1(312) 455-8498 (outside USA)

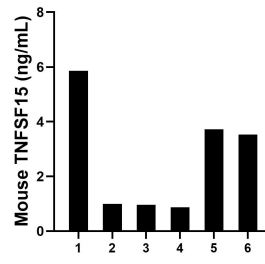
E: proteintech@ptglab.com
W: ptglab.com

This product is exclusively available under Proteintech Group brand and is not available to purchase from any other manufacturer.

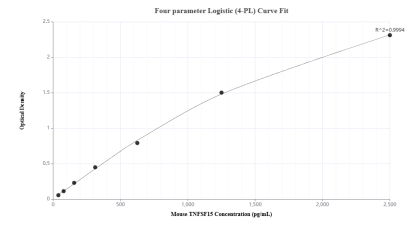
Selected Validation Data



The mean TNFSF15 concentration was determined to be 5.70 ng/mL in mouse large intestine extract based on a 4.5 mg/mL extract load.



Serum of six mice was measured. The mouse TNFSF15 concentration of detected samples was determined to be 2.66 ng/mL with a range of 0.87 - 5.86 ng/mL.



Sandwich ELISA standard curve of MP02970-1, Mouse TNFSF15 Recombinant Matched Antibody Pair - PBS only. 87367-2-PBS was coated to a plate as the capture antibody and incubated with serial dilutions of standard Eg5273. 87367-1-PBS was HRP conjugated as the detection antibody. Range: 39.1-2500 pg/mL