

For Research Use Only

ALKBH1 Recombinant monoclonal antibody, PBS Only (Detector)

Catalog Number: 87369-4-PBS



Basic Information

Catalog Number: 87369-4-PBS	GenBank Accession Number: BC025787	Purification Method: Protein A purification
Size: 100ug , Concentration: 1 mg/ml by Nanodrop;	GeneID (NCBI): 8846	CloneNo.: 252140E8
Source: Rabbit	UNIPROT ID: Q13686	
Isotype: IgG	Full Name: alkB, alkylation repair homolog 1 (E. coli)	
Immunogen Catalog Number: AG27520	Calculated MW: 389 aa, 44 kDa	

Applications

Tested Applications:
Sandwich ELISA, Indirect ELISA

Species Specificity:
human

Product Information

87369-4-PBS targets ALKBH1 as part of a matched antibody pair:

MP03012-2: 87369-5-PBS capture and 87369-4-PBS detection (validated in Sandwich ELISA)

Unconjugated rabbit recombinant monoclonal antibody in PBS only (BSA and azide free) storage buffer at a concentration of 1 mg/mL, ready for conjugation. Created using Proteintech's proprietary in-house recombinant technology. Recombinant production enables unrivalled batch-to-batch consistency, easy scale-up, and future security of supply.

This conjugation ready format makes antibodies ideal for use in many applications including: ELISAs, multiplex assays requiring matched pairs, mass cytometry, and multiplex imaging applications. Antibody use should be optimized by the end user for each application and assay.

Storage

Storage:
Store at -80°C.

Storage Buffer:
PBS only, pH7.3

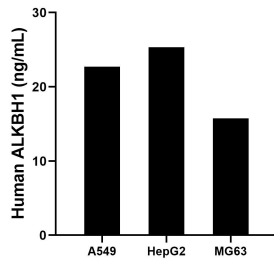
For technical support and original validation data for this product please contact:

T: 1 (888) 4PTGLAB (1-888-478-4522) (toll free in USA), or 1(312) 455-8498 (outside USA)

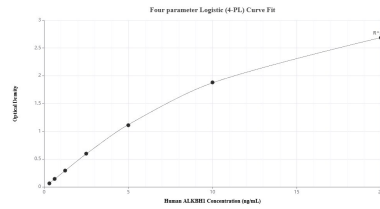
E: proteintech@ptglab.com
W: ptglab.com

This product is exclusively available under Proteintech Group brand and is not available to purchase from any other manufacturer.

Selected Validation Data



The mean ALKBH1 concentration was determined to be 22.71 ng/mL in A549 cell extract based on a 1.2 mg/mL extract load, 25.33 ng/mL in HepG2 cell extract based on a 1.2 mg/mL extract load and 15.75 ng/mL in MG63 cell extract based on a 2.3 mg/mL extract load.



Sandwich ELISA standard curve of MP03012-2, Human ALKBH1 Recombinant Matched Antibody Pair - PBS only. 87369-5-PBS was coated to a plate as the capture antibody and incubated with serial dilutions of standard Ag27520. 87369-4-PBS was HRP conjugated as the detection antibody. Range: 0.313-20 ng/mL