

For Research Use Only

MSMB Recombinant monoclonal antibody

Catalog Number:87375-1-RR



Basic Information

Catalog Number: 87375-1-RR	GenBank Accession Number: BC005257	Purification Method: Protein A purification
Size: 100ul , Concentration: 1000 µg/ml by Nanodrop;	GeneID (NCBI): 4477	CloneNo.: 252111A5
Source: Rabbit	UNIPROT ID: P08118	Recommended Dilutions: WB: 1:5000-1:50000
Isotype: IgG	Full Name: microseminoprotein, beta-	
Immunogen Catalog Number: AG8674	Calculated MW: 114 aa, 13 kDa	
	Observed MW: 15 kDa	

Applications

Tested Applications: WB, ELISA	Positive Controls: WB : human urine sample,
Species Specificity: human	

Background Information

MSMB is a member of the immunoglobulin binding factor family. It is synthesized by the epithelial cells of the prostate gland and secreted into the seminal plasma. This protein has inhibin-like activity. It may have a role as an autocrine paracrine factor in the uterus, breast and other female reproductive tissues. The expression of the encoded protein is found to be decreased in prostate cancer.

Storage

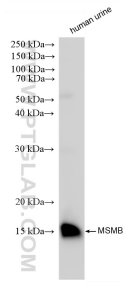
Storage:
Store at -20°C. Stable for one year after shipment.
Storage Buffer:
PBS with 0.02% sodium azide and 50% glycerol, pH7.3
Aliquoting is unnecessary for -20°C storage

*** 20ul sizes contain 0.1% BSA

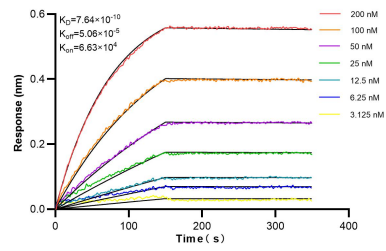
For technical support and original validation data for this product please contact:
T: 1 (888) 4PTGLAB (1-888-478-4522) (toll free in USA), or 1(312) 455-8498 (outside USA) E: proteintech@ptglab.com
W: ptglab.com

This product is exclusively available under Proteintech Group brand and is not available to purchase from any other manufacturer.

Selected Validation Data



human urine sample were subjected to SDS PAGE followed by western blot with 87375-1-RR (MSMB antibody) at dilution of 1:10000 incubated at room temperature for 1.5 hours.



Biolayer interferometry (BLI) kinetic assays of 87375-1-RR against Human MSMB were performed. The affinity constant is 0.764 nM.