

For Research Use Only

CCL4L1 Recombinant monoclonal antibody

Catalog Number:87376-1-RR



Basic Information

Catalog Number: 87376-1-RR	GenBank Accession Number: N/A	Purification Method: Protein A purification
Size: 100ul , Concentration: 1000 µg/ml by Nanodrop;	GeneID (NCBI): 9560	CloneNo.: 251685H1
Source: Rabbit	UNIPROT ID: Q8NHW4-1	Recommended Dilutions: WB: 1:2000-1:10000
Isotype: IgG	Full Name: chemokine (C-C motif) ligand 4-like 1	
Immunogen Catalog Number: EG5335	Calculated MW: 10 kDa	
	Observed MW: 15 kDa	

Applications

Tested Applications: WB, ELISA	Positive Controls: WB : PMA, LPS and Brefeldin A treated THP-1 cells,
Species Specificity: human	

Storage

Storage:
Store at -20°C. Stable for one year after shipment.
Storage Buffer:
PBS with 0.02% sodium azide and 50% glycerol, pH7.3
Aliquoting is unnecessary for -20°C storage

*** 20ul sizes contain 0.1% BSA

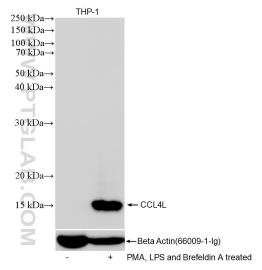
For technical support and original validation data for this product please contact:

T: 1 (888) 4PTGLAB (1-888-478-4522) (toll free in USA), or 1(312) 455-8498 (outside USA)

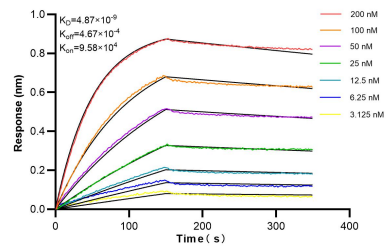
E: proteintech@ptglab.com
W: ptglab.com

This product is exclusively available under Proteintech Group brand and is not available to purchase from any other manufacturer.

Selected Validation Data



PMA, LPS and Brefeldin A treated THP-1 cells were subjected to SDS PAGE followed by western blot with 87376-1-RR (CCL4L1 antibody) at dilution of 1:5000 incubated at room temperature for 1.5 hours.



Biolayer interferometry (BLI) kinetic assays of 87376-1-RR against Human CCL4L1 were performed. The affinity constant is 4.87 nM.