

For Research Use Only

LSP1 Recombinant monoclonal antibody

Catalog Number:87378-1-RR



Basic Information

Catalog Number: 87378-1-RR	GenBank Accession Number: NM_002339.2	Purification Method: Protein A purification
Size: 100ul , Concentration: 1000 µg/ml by Nanodrop;	GeneID (NCBI): 4046	CloneNo.: 252179A7
Source: Rabbit	UNIPROT ID: P33241-1	Recommended Dilutions: WB: 1:5000-1:50000 IHC: 1:500-1:2000 IF/ICC: 1:250-1:1000
Isotype: IgG	Full Name: lymphocyte-specific protein 1	
Immunogen Catalog Number: EG5464	Calculated MW: 37 kDa	
	Observed MW: 52 kDa	

Applications

Tested Applications:
WB, IHC, IF/ICC, ELISA

Species Specificity:
human

Note-IHC: suggested antigen retrieval with TE buffer pH 9.0; (*) Alternatively, antigen retrieval may be performed with citrate buffer pH 6.0

Positive Controls:

WB : Raji cells, HL-60 cells, U-937 cells, Daudi cells, HuT 78 cells

IHC : human tonsillitis tissue,

IF/ICC : Daudi cells,

Background Information

Lymphocyte-specific protein 1(LSP1), also known as leukocyte-specific protein 1, is an F-actin binding and cytoskeleton associated protein. The protein is expressed in lymphocytes, neutrophils, and macrophages. LSP1 is a substrate for mitogen-activated protein kinase (MAPK)-activated protein kinase 2 and protein kinase C. The implication of LSP1 in diverse biological processes, such as inflammation and malignancy, suggests the major regulatory role of LSP1 in signal transduction(PMID: 38254711).

Storage

Storage:

Store at -20°C. Stable for one year after shipment.

Storage Buffer:

PBS with 0.02% sodium azide and 50% glycerol, pH7.3

Aliquoting is unnecessary for -20°C storage

***** 20ul sizes contain 0.1% BSA**

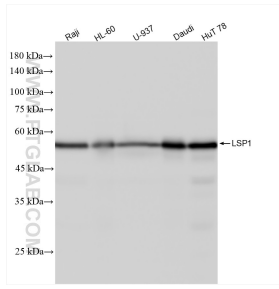
For technical support and original validation data for this product please contact:

T: 1 (888) 4PTGLAB (1-888-478-4522) (toll free in USA), or 1(312) 455-8498 (outside USA)

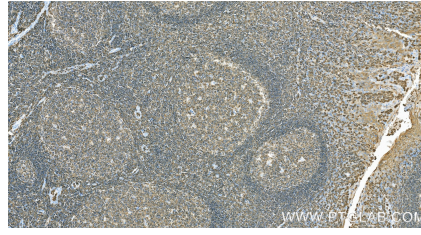
E: proteintech@ptglab.com
W: ptglab.com

This product is exclusively available under Proteintech Group brand and is not available to purchase from any other manufacturer.

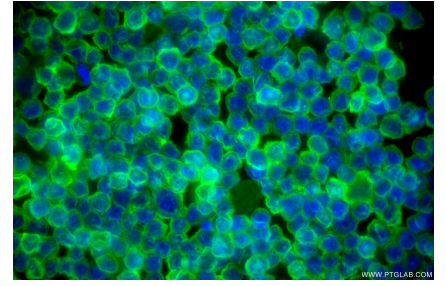
Selected Validation Data



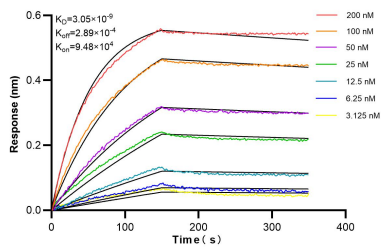
Various lysates were subjected to SDS PAGE followed by western blot with 87378-1-RR (LSP1 antibody) at dilution of 1:10000 incubated at room temperature for 1.5 hours.



Immunohistochemical analysis of paraffin-embedded human tonsillitis tissue slide using 87378-1-RR (LSP1 antibody) at dilution of 1:1000 (under 20x lens). Heat mediated antigen retrieval with Tris-EDTA buffer (pH 9.0).



Immunofluorescent analysis of (4% PFA) fixed Daudi cells using LSP1 antibody (87378-1-RR, Clone: 252179A7) at dilution of 1:500 and CoraLite®488-Conjugated Goat Anti-Rabbit IgG(H+L) (SA00013-2).



Biolayer interferometry (BLI) kinetic assays of 87378-1-RR against Human LSP1 were performed. The affinity constant is 3.05 nM.