

For Research Use Only

RHBG Recombinant monoclonal antibody, PBS Only

Catalog Number: 87381-1-PBS



Basic Information

Catalog Number: 87381-1-PBS	GenBank Accession Number: BC065218	Purification Method: Protein A purification
Size: 100ug , Concentration: 1 mg/ml by Nanodrop;	GeneID (NCBI): 57127	CloneNo.: 252509G12
Source: Rabbit	UNIPROT ID: Q9H310	
Isotype: IgG	Full Name: Rh family, B glycoprotein (gene/pseudogene)	
	Calculated MW: 441 aa, 47 kDa	
	Observed MW: 50 kDa	

Applications

Tested Applications:
WB, Indirect ELISA

Species Specificity:
human, mouse, rat

Background Information

RHBG also known as SLC42A2, is one of two non-erythroid members of the Rhesus (Rh) protein family. RHBG protein is present in the kidney and is expressed in distal nephron segments, from the distal convoluted tubule through the collecting duct (PMID: 23324176).

Storage

Storage:
Store at -80°C.

Storage Buffer:
PBS only, pH7.3

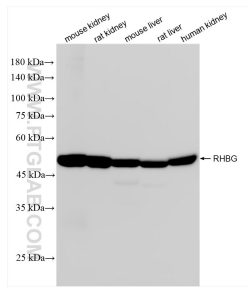
For technical support and original validation data for this product please contact:

T: 1 (888) 4PTGLAB (1-888-478-4522) (toll free in USA), or 1(312) 455-8498 (outside USA)

E: proteintech@ptglab.com
W: ptglab.com

This product is exclusively available under Proteintech Group brand and is not available to purchase from any other manufacturer.

Selected Validation Data



Various lysates were subjected to SDS PAGE followed by western blot with 87381-1-RR (RHBG antibody) at dilution of 1:5000 incubated at room temperature for 1.5 hours. This data was developed using the same antibody clone with 87381-1-PBS in a different storage buffer formulation.