

For Research Use Only

# RHBG Recombinant monoclonal antibody

Catalog Number: 87381-1-RR



## Basic Information

<b>Catalog Number:</b> 87381-1-RR	<b>GenBank Accession Number:</b> BC065218	<b>Purification Method:</b> Protein A purification
<b>Size:</b> 100ul , Concentration: 1000 µg/ml by Nanodrop;	<b>GeneID (NCBI):</b> 57127	<b>CloneNo.:</b> 252509G12
<b>Source:</b> Rabbit	<b>UNIPROT ID:</b> Q9H310	<b>Recommended Dilutions:</b> WB: 1:2000-1:10000
<b>Isotype:</b> IgG	<b>Full Name:</b> Rh family, B glycoprotein (gene/pseudogene)	
	<b>Calculated MW:</b> 441 aa, 47 kDa	
	<b>Observed MW:</b> 50 kDa	

## Applications

**Tested Applications:**  
WB, ELISA

**Species Specificity:**  
human, mouse, rat

### Positive Controls:

WB : mouse kidney tissue, rat kidney tissue, mouse liver tissue, rat liver tissue, human kidney tissue

## Background Information

RHBG also known as SLC42A2, is one of two non-erythroid members of the Rhesus (Rh) protein family. RHBG protein is present in the kidney and is expressed in distal nephron segments, from the distal convoluted tubule through the collecting duct(PMID: 23324176).

## Storage

**Storage:**  
Store at -20°C. Stable for one year after shipment.

**Storage Buffer:**  
PBS with 0.02% sodium azide and 50% glycerol, pH7.3

Aliquoting is unnecessary for -20°C storage

\*\*\* 20ul sizes contain 0.1% BSA

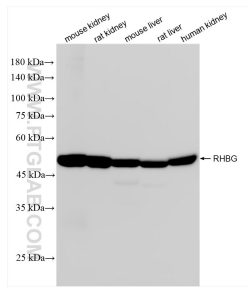
For technical support and original validation data for this product please contact:

T: 1 (888) 4PTGLAB (1-888-478-4522) (toll free in USA), or 1(312) 455-8498 (outside USA)

E: proteintech@ptglab.com  
W: ptglab.com

This product is exclusively available under Proteintech Group brand and is not available to purchase from any other manufacturer.

## Selected Validation Data



Various lysates were subjected to SDS PAGE followed by western blot with 87381-1-RR (RHBG antibody) at dilution of 1:5000 incubated at room temperature for 1.5 hours.