

For Research Use Only

# GFRA1 Recombinant monoclonal antibody, PBS Only

Catalog Number: 87383-1-PBS



## Basic Information

<b>Catalog Number:</b> 87383-1-PBS	<b>GenBank Accession Number:</b> NM_005264.8	<b>Purification Method:</b> Protein A purification
<b>Size:</b> 100ug, Concentration: 1 mg/ml by Nanodrop;	<b>GeneID (NCBI):</b> 2674	<b>CloneNo.:</b> 252616C9
<b>Source:</b> Rabbit	<b>UNIPROT ID:</b> P56159-1	
<b>Isotype:</b> IgG	<b>Full Name:</b> GDNF family receptor alpha 1	
<b>Immunogen Catalog Number:</b> EG5427	<b>Calculated MW:</b> 51 kDa	
	<b>Observed MW:</b> 55 kDa	

## Applications

**Tested Applications:**  
WB, Indirect ELISA

**Species Specificity:**  
human

## Background Information

GFRA1, also named as GDNFRA, RETL1 and TRNR1, is a receptor for GDNF. It mediates the GDNF-induced autophosphorylation and activation of the RET receptor. GFRA1 has two isoforms with MW 45-50 kDa and 50-55 kDa.

## Storage

**Storage:**  
Store at -80°C.

**Storage Buffer:**  
PBS only, pH7.3

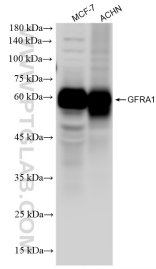
For technical support and original validation data for this product please contact:

T: 1 (888) 4PTGLAB (1-888-478-4522) (toll free in USA), or 1(312) 455-8498 (outside USA)

E: [proteintech@ptglab.com](mailto:proteintech@ptglab.com)  
W: [ptglab.com](http://ptglab.com)

This product is exclusively available under Proteintech Group brand and is not available to purchase from any other manufacturer.

## Selected Validation Data



Various lysates were subjected to SDS PAGE followed by western blot with 87383-1-RR (GFRA1 antibody) at dilution of 1:3000 incubated at room temperature for 1.5 hours. This data was developed using the same antibody clone with 87383-1-PBS in a different storage buffer formulation.