

For Research Use Only

DPEP1 Recombinant monoclonal antibody

Catalog Number:87384-1-RR



Basic Information

Catalog Number: 87384-1-RR	GenBank Accession Number: NM_001128141.3	Purification Method: Protein A purification
Size: 100ul , Concentration: 1000 µg/ml by Nanodrop;	GeneID (NCBI): 1800	CloneNo.: 252686H3
Source: Rabbit	UNIPROT ID: P16444	Recommended Dilutions: WB: 1:5000-1:50000
Isotype: IgG	Full Name: dipeptidase 1 (renal)	
Immunogen Catalog Number: EG5510	Calculated MW: 46 kDa	
	Observed MW: 46 kDa	

Applications

Tested Applications: WB, ELISA	Positive Controls: WB : human testis tissue,
Species Specificity: human	

Background Information

DPEP1(Dipeptidase 1) is also named as MDP, RDP and belongs to the peptidase M19 family. It is a glycoprotein that plays an important role in the regulation of Leukotriene activity. DPEP1 converts Leukotriene D4 to Leukotriene E4.

Storage

Storage:
Store at -20°C. Stable for one year after shipment.
Storage Buffer:
PBS with 0.02% sodium azide and 50% glycerol, pH7.3
Aliquoting is unnecessary for -20°C storage

***** 20ul sizes contain 0.1% BSA**

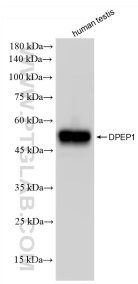
For technical support and original validation data for this product please contact:

T: 1 (888) 4PTGLAB (1-888-478-4522) (toll free in USA), or 1(312) 455-8498 (outside USA)

E: proteintech@ptglab.com
W: ptglab.com

This product is exclusively available under Proteintech Group brand and is not available to purchase from any other manufacturer.

Selected Validation Data



human testis tissue were subjected to SDS PAGE followed by western blot with 87384-1-RR (DPEP1 antibody) at dilution of 1:10000 incubated at room temperature for 1.5 hours.